

Chapter 16 is all about forks and fork related products. Stock replacement forks, Custom forks, Billet aluminum forks, Chrome plated forks as well as a wide range of replacement parts. Zodiac has always been running up front when it comes to complete front ends. We offer a wide range of Italian made GCB front forks in both Classic and Upside Down versions. Stock replacement forks and complete Springer forks. Recently we introduced the Zodiac exclusive Ton Pels Signature Series "Fat Bubba" front forks. This very popular fork is now also available as the "Black Bubba". The Black Bubba has the same features as the Fat Bubba's, but has a powder coated black finish. Another new design from Ton Pels is the "Naked Bubba" front forks. This stylish TÜV approved fork is a perfect fork for sleek built custom bikes. New in this issue are Rebuffini Triple Tree kits. These high-end kits are machined to perfection and available in polished, chrome, as well as black finished. Another novelty are complete Öhlins front forks, world famous for their road holding capacities and built to extremely high standards. Apart from complete front forks we have loads of replacement parts available: fork tubes, fork sliders, seals, damper elements, spring kits and all these little bits and pieces to enhance, maintain or rebuild your front end.



**Ton Pels Signature series
"Fat Bubba" and "Black
Bubba" front forks**



**World famous
Öhlins forks**



**Rebuffini adjustable rake
ladi triple trees**



Rebuffini's Pan triple trees

NEW

FRONT FORKS BY ÖHLINS

Öhlins is probably the best known name when it comes to front forks, particularly in the more recent history. Not only you will find Öhlins forks in expensive high-end sports bikes, Moto GP race bikes and Endurance racers also they become more and more popular in Heavy Tour Bikes. We therefore developed in cooperation with Öhlins a set of forks for the Softail and Dyna models. Öhlins forks are world famous for their road holding capacities and are built to extremely high standards. Zodiac has matched these superior quality front forks with their Fat & Beefy Wide Glide (252 mm pitch) Billet Aluminum Triple Trees. Outer fork tubes are large diameter and tapered from 54 mm to 50 mm for increased rigidity, inner tubes are 43 mm in diameter. The top triple tree is an impressive 30 mm thick, where the lower triple tree is even thicker than that, measuring 35 mm. Both trees have a 48 mm clamping section for the fork tubes. The lower triple tree is equipped with fork stops that can be easily adapted for use on custom bikes. Fork length is 775 mm (measured from the underside of the top triple tree to the wheel axle center), the same as the stock length on most Softail models. Forks feature rebound, compression and spring load adjusters to allow you to tune your forks to perfection. Because of the very wide range of applications caliper brackets and wheel axle must be ordered separately.

744615 Öhlins front fork with polished Zodiac triple tree kit

Clear anodized billet aluminum caliper brackets for 2000-up stock & aftermarket calipers

744608 For right side calipers

744609 For left side calipers

Clear anodized billet aluminum caliper brackets for Brembo

744603 For right side calipers

744604 For left side calipers

Clear anodized billet aluminum brackets for radial calipers

744600 Right side radial calipers

744601 Left side radial calipers

Optional & Replacement parts

744602 Öhlins fork leg set

744605 Zodiac billet aluminum triple tree set

744606 Front wheel axle 3/4" (19.05 mm)

744607 Front wheel axle 25 mm



16



ADVANCED SUSPENSION TECHNOLOGY





ZODIAC FRONT FORKS BY GCB

GCB developed the ultimate front suspension improvement for motorcycles. Improved handling and damping characteristics are the benefits of these precision made units, which feature chrome-moly fork tubes, machined aluminum alloy sliders and hard anodized damper rods. G.C.B. Srl. Italy specially manufactures these fork legs for Zodiac. The triple trees are machined from a block of billet aluminum and are mirror shine polished after machining. Forks are available with 0 degrees, 3 degrees, or 6 degrees raked trees. Can be used with most single or dual stock and aftermarket disc brake calipers. Caliper brackets for 2000 to present style calipers are sold in pairs but must be ordered separately. Brackets for other calipers must be Custom made. These state-of-the-art forks are tested and approved by the German TÜV as replacement forks for all models Harley-Davidson and are distributed exclusively by Zodiac International.

The completely re-designed and re-styled version of our Classic Upside Down forks features:

- Smoothened 54 mm aluminum top tubes
- 43 mm Chrome-moly inner tubes
- Completely new developed damper units
- Individual fork spring pre-load adjustment
- Cylindrical shaped billet aluminum wheel axle clamps
- Hidden mount wheel axle
- Billet aluminum Wide Glide 9.85" wide triple trees with 0 degree, 3 degrees, or 6 degrees rake
- Available in 31 1/2" or 33 3/4" length
- 5 1/2" Travel Complete Smoothglide Upside Down forks

Complete Smoothglide Upside Down forks

- 722052** 31 1/2" length, 0 degrees raked
- 722184** 31 1/2" length, 3 degrees raked
- 722186** 31 1/2" length, 6 degrees raked
- 722053** 33 3/4" length, 0 degrees raked
- 722185** 33 3/4" length, 3 degrees raked
- 722187** 33 3/4" length, 6 degrees raked

Complete Smoothglide Upside Down fork with black anodized fork sliders and bottom legs, polished triple tree

- 722086** 31 1/2" length, 0 degrees raked
- 722188** 31 1/2" length, 3 degrees raked
- 722190** 31 1/2" length, 6 degrees raked
- 722089** 33 3/4" length, 0 degrees raked
- 722189** 33 3/4" length, 3 degrees raked
- 722191** 33 3/4" length, 6 degrees raked

Optional and replacement parts for Smoothglide forks

- 722179** Brackets for 2000-up style calipers (pair)
- 722178** Fender bracket (each)
- 722056** Clear anodized fork tube assembly, stock length (pair)
- 722087** Black anodized fork tube assembly, stock length (pair)
- 722057** Clear anodized fork tube assembly, 33 3/4" length (pair)
- 722088** Black anodized fork tube assembly, 33 3/4" length (pair)
- 750666** **NEW** Inner tube 31 1/2" length (each)
- 750667** **NEW** Inner tube 33 3/4" length (each)
- 234059** Triple Tree set 0 degrees raked
- 234060** Triple Tree set 3 degrees raked
- 234084** Triple Tree set 6 degrees raked
- 721959** Front wheel axle Wide Glide
- 720328** Oil seal, set of 2

Fork oil change:

For normal street use: light weight oil SAE 10 or similar.

For extreme road use or race use: SAE 20 or 30. 31 1/2" length uses 350 cc per fork leg when legs are COMPLETELY drained. 33 3/4" length uses 450 cc per fork leg when legs are COMPLETELY drained.

Note: Handlebar damper rubbers and bushings must be shortened for correct fit.





TÜV APPROVED UPSIDE DOWN FORKS BY GCB

These classic model Upside Down forks feature massive 54 mm aluminum top tubes with improved 43 mm chrome-moly inner tubes and individual fork spring pre-load adjustment. Upside Down forks offer increased rigidity over conventional slider forks and drastically improved road holding, especially on bumpy roads and fast corners. Features CNC machined polished billet aluminum triple tree. Fork legs feature clear anodized finish top tubes and bottom legs. Bottom legs feature hidden axle mount and integrated brackets that accepts the 1984-1999 style OEM single or dual front calipers or any aftermarket caliper styled after 1984-1999 OEM caliper. Adapter brackets for use with 2000-up style calipers are separately available. Check out the caliper section of this catalog to see our selection of calipers from Performance Machine, Harrison Billet and GMA. These forks are available with 0 degrees, 3 degrees, or 6 degrees rake in the triple trees. Fork width is stock Wide Glide 9.85", stock length measures 32". Both stock and overstock have a travel of 5.5" and a 3/4" axle.

Complete Classic model Upside Down forks with clear anodized fork sliders and bottom legs, polished triple tree

- 721960** 32" Length, not raked
- 722180** 32" Length, 3 degrees raked
- 722182** 32" Length, 6 degrees raked
- 721961** 34" Length, not raked
- 722181** 34" Length, 3 degrees raked
- 722183** 34" Length, 6 degrees raked

Replacement parts for Upside Down forks with 43 mm inner tubes

- 722209** Set of 2 adapter brackets to allow installation of 2000-up model calipers
- 721957** Fork tube assembly, stock length (pair)
- 721958** Fork tube assembly, 2" over stock (pair)
- 750666** **NEW** Inner tube 31 1/2" length (each)
- 750667** **NEW** Inner tube 33 3/4" length (each)
- 234059** Triple Tree set 0 degrees raked
- 234060** Triple Tree set 3 degrees raked
- 234084** Triple Tree set 6 degrees raked
- 721959** Front wheel axle Wide Glide
- 720328** Oil seal, set of 2

Fork oil change:

For normal street use: light weight oil SAE 10 or similar.

For extreme road use or race use: SAE 20 or 30. The 32" fork legs use 350 cc per fork leg, 34" fork legs use 450 cc per fork leg when legs are COMPLETELY drained.

Note: Handlebar damper rubbers and bushings must be shortened for correct fit.



"LIMITED EDITION" INVERTED ZODIAC FORKS MANUFACTURED BY GCB

A design version of GCB's famous Inverted front forks, manufactured exclusively for Zodiac in a limited quantity. These forks add real class to your motorcycle or Custom project. The 56 mm Fat Fork Sliders, Triple Trees, Axle pockets and Skid Plates are made from aluminum billets and come in a mirror shine high luster polished finish. Forks have a Wide Glide 9 59/64" (252 mm) width and are available with 31 1/2" (800 mm) or 39 1/2" (1003 mm) length fork legs. Triple trees are available in 0 degrees, +3 degrees and +6 degrees rake. Forks come complete with triple trees and steering stops. Wheel axle, axle spacers, fender brackets, and brackets to mount 1984 thru 1999 style brake calipers must be ordered separately. Brackets to mount other calipers must be custom made.

Complete UPSD forks

0 degrees raked 3 degrees raked 6 degrees raked

723152 **723153** **723154** 31 1/2" (800 mm) length
723155 **723156** **723157** 39 1/2" (1003 mm) length

Optional parts

723158 Brackets for 1984 thru 1999 style calipers (pair)
723159 Fender bracket (each)
234049 Front wheel axle with washers and nut

Replacement parts

733129 0 degree raked triple tree kit
733130 3 degrees raked triple tree kit
733131 6 degrees raked triple tree kit
723150 Fork leg assembly 31 1/2", pair
723151 Fork leg assembly 39 1/2", pair



MILLENNIUM STYLE FORKS

A design version of our Classic forks that really adds something to your custom project. All the same advantages as the Classic forks, but with flowing lines, and polished billet aluminum fork sliders with the axle mounts hidden under Bullet Style covers. Fork sliders are topped off with extra-ordinary fork boots. These forks take single or dual 1984 thru 1999 style OEM or aftermarket brake calipers and are available as either Narrow Glide or Wide Glide with polished triple trees, and your choice of 31" and 32" length. Wide Glide forks are available with 0, 3 and 6 degree rake in the triple trees.

Complete Millenium GCB forks

722129 Wide Glide 31"
722135 Wide Glide 31" with 3 degree rake
722136 Wide Glide 31" with 6 degree rake
722130 Wide Glide 32"
722137 Wide Glide 32" with 3 degree rake
722138 Wide Glide 32" with 6 degree rake

Replacement fork leg sets

722125 Complete fork leg set 31"
722126 Complete fork leg set 32"

Replacement parts

721959 Front wheel axle Wide Glide



GCB-INCLINED UPSIDE DOWN FORKS

This design version of GCB's Smoothglide front forks adds a touch of class to your Custom project. Unlike most front ends, that have the triple tree square to the neck post, these ones feature special inclined triple trees and fork stops that provide that sought-after super sleek look. In addition, and to emphasize this the front wheel axle and top steering head nut are flush mounted. The 56 mm fat looking fork sliders, triple trees, axle pockets and skid plates are made from aluminum billets and come in your choice of polished, black anodized or chrome plated. Forks are available as Wide Glide with 9 59/64" (252 mm) pitch, and in lengths from 30 1/2" (775 mm) thru 41 1/2" (1054 mm). Wide Glide forks are also available with 3 degrees rake in the triple trees. Forks come complete with steer stops, 3/4" wheel axle and axle spacers, and an instrument bracket. Wide Glide forks are supplied with one disc spacer for use with a 1984 thru 1999 disc brake rotor and Narrow Glide front hub. Fender brackets, and brackets to mount 2000 to present style brake calipers must be ordered separately, brackets to mount other calipers must be custom made. Chrome plated forks are for show bikes only and are not recommended for all day use. For this reason GCB does not give warranty on chrome plating. For those who want to use the proven quality of GCB forks but want to use other triple trees we also supply complete fork leg sets

Complete front forks with 0 degrees Wide Glide triple trees

Black	Polished	Chrome	
720379	720384	720389	30 1/2" (775 mm) length
720380	720385	720390	33 1/2" (851 mm) length
720381	720386	720391	36 1/2" (927 mm) length
720382	720387	720392	39 1/2" (1003 mm) length
720383	720388	722297	41 1/2" (1054 mm) length

Complete front forks with 3 degrees Wide Glide triple trees

Black	Polished	Chrome	
750360	750365	750370	30 1/2" (775 mm) length
750361	750366	750371	33 1/2" (851 mm) length
750362	750367	750372	36 1/2" (927 mm) length
750363	750368	750373	39 1/2" (1003 mm) length
750364	750369	750374	41 1/2" (1054 mm) length

Fork leg sets

Black	Polished	Chrome	
750375	750385	750380	30 1/2" (775 mm) length
750376	750386	750381	33 1/2" (851 mm) length
750377	750387	750382	36 1/2" (927 mm) length
750378	750388	750383	39 1/2" (1003 mm) length
750379	750389	750384	41 1/2" (1054 mm) length

Optional and replacement parts

722179	Brackets for 2000-up style calipers (pair)
722178	Fender bracket (each)
721959	Front wheel axle Wide Glide

Triple Trees

0 degree	3 degree	
750390	750393	Wide Glide black
750391	750394	Wide Glide polished
750392	750395	Wide Glide chrome



ZODIAC WIDE GLIDE FORKS BY GCB

Forks are supplied as a complete kit with billet machined top and bottom plates, steering stem, front axle with washer and axle nut. These massive 43 mm forks are a direct bolt-on replacement for the stock small diameter 35 mm forks, or later style 39 mm. Forks feature integrated caliper brackets that take the 1984 thru 1999 style OEM front caliper or any aftermarket caliper styled after 1984 thru 1999 OEM caliper. Check out the caliper section of this catalog to see our selection of calipers from Performance Machine, Harrison Billet and GMA. The kit is designed to use with the stock Harley-Davidson front wheel, and brake discs. If a Narrow Glide front fender is used, appropriate spacers are needed. The handlebar mounting system and stock headlight hanger are retained. A custom headlight bracket is included for those who want to use an aftermarket custom headlight. A better ride and improved handling characteristics are realized from the installation of these forks, which feature fixed damping and adjustable spring rate, by air caps. The weight of the total fork assembly is an incredible 7 lbs. (3 kg) lighter than the stock Harley 35 mm fork. Stock length 31" (81 cm), travel 5.5" (14 cm) Axle 3/4" (19 mm). Fork crown width Narrow Glide forks is 7.68" (195 mm), Wide Glide 9.85" (250 mm). Wide Glide forks are available with 0,3 and 6 degree rake in the triple trees. When forks are installed in pre-1984 4 Speed or 1984-up Softtail frames, special bottom bearing cup with integrated steering stop must be used. Handlebar damper kit rubbers and bushing must be shortened for correct fit.

Complete Classic forks (TÜV approved)

- 721964** Wide Glide front fork stock length (31")
- 722131** Wide Glide front fork stock length (31") with 3 degree rake
- 722132** Wide Glide front fork stock length (31") with 6 degree rake
- 721965** Wide Glide front fork + 4"
- 722133** Wide Glide front fork + 4" with 3 degree rake
- 722134** Wide Glide front fork + 4" with 6 degree rake

Replacement parts

- 720408** Axle kit Narrow Glide fork
- 234049** Front wheel axle with washers and nut
- 721955** Complete fork leg set stock length (31")
- 721956** Complete fork leg set + 4"
- 720341** Inner tubes set standard
- 720342** Inner tubes set overstock +4"
- 720343** Inner tubes set overstock +6"
- 720344** Inner tubes set overstock +10"

Fork oil change: Use light weight oil SAE 10 or SAE 20 (ZPN 235204), 350 cc per fork leg for stock length, 450 cc per fork leg for over stock length.





TON PELS SIGNATURE "FAT BUBBA" FRONT FORKS

These "Made in Europe" Billet Aluminum Forks are something else. They feature massive Triple Tree clamps, large diameter bottom sliders and covers, fully covered fork tubes, and Hidden Axle mount. This Zodiac exclusive Billet aluminum front fork is un-compromised in price and quality. No matter if you are going to use the Fat Bubba forks as stock replacement or for your Custom Project, it will provide the Fat look wanted by today's Custom builders. Triple tree, slider covers and sliders are machined from billet aluminum and are available in mirror like, highly polished, or black powder coated finish. The upper triple tree clamp is 1 1/8" (29 mm) thick, the lower triple tree clamp measures 1 5/16" (34 mm). The fork slider covers and bottom legs have a very impressive diameter of 2 3/8" (60 mm). The lower fork sliders feature fender brackets, as well as dual caliper mount. Conversion brackets that take 1984-1999 style OEM or aftermarket brake calipers are available but must be ordered separately. Other conversion brackets must be custom made. The front wheel axle has a hidden mount for extra sleek looks. Forks are available in +3", +4", +6", +8", +12", +14" and +16" over stock FL length (actual fork leg length is also listed) and with 0, 3, and 6 degrees raked triple tree. These Fat Bubba forks come complete with 3 different fork stops to work with almost any stock or aftermarket frame. A bottle of fork oil is included with each set.

Complete Fat Bubba front forks, polished

Stock rake	+3° rake	+6° rake	
721366	721367	721368	+ 3", Fork leg length 786 mm (31")
722242	722246	722250	+ 4", Fork leg length 811 mm (32")
722243	722247	722300	+ 6", Fork leg length 862 mm (34")
722244	722248	722301	+ 8", Fork leg length 913 mm (36")
722245	722249	722302	+12", Fork leg length 1015 mm (40")
722819	722825	722852	+14", Fork leg length 1040 mm (42")
722911	722912	722913	+16", Fork leg length 1065 mm (44")

Complete Fat Bubba front forks, black

Stock rake	+3° rake	+6° rake	
722670	722675	722680	+ 3", Fork leg length 786 mm (31")
722671	722676	722681	+ 4", Fork leg length 811 mm (32")
722672	722677	722682	+ 6", Fork leg length 862 mm (34")
722673	722678	722683	+ 8", Fork leg length 913 mm (36")
722674	722679	722684	+12", Fork leg length 1015 mm (40")
722783	722784	722788	+14", Fork leg length 1040 mm (42")
722789	722790	722791	+16", Fork leg length 1065 mm (44")

Note: Length is measured from the underside of the upper triple to the center of the wheel axle. 4" over stock FL is the same as stock FXWG.

Caliper brackets

Polished	Black	
735019	722694	For 1984-1999 style calipers, fits left or right, sold each
735025	722695	For 2000 to present style calipers. Left
735026	722696	For 2000 to present style calipers. Right

Replacement inner tube and fork slider assemblies, per pair

Polished	Black	
722230	722665	3" Overstock
722231	722666	4" Overstock
722232	722667	6" Overstock
722233	722668	8" Overstock
722303	722669	12" Overstock
722792	722794	14" Overstock, pair
722793	722795	16" Overstock, pair

Replacement covers

Polished	Black	
722234	722685	Upper fork tube covers
722235	722686	Slider covers +3"
722236	722687	Slider covers +4"
722237	722688	Slider covers +6"
722238	722689	Slider covers +8"
722305	722690	Slider covers +12"
722357	722697	Slider covers +14"
722358	722698	Slider covers +16"

Replacement triple trees

Polished	Black	
722239	722691	Stock rake
722240	722692	3 Degrees raked
722241	722693	6 Degrees raked

Replacement parts

740050	Fork oil seals, pair
722298	Replacement front wheel axle
711278	Slider bushing (OEM 45866-84)
722369	Optional wheel axle for use with 1" wheel barings

Fork oil change:

Per fork leg 300 cc 20W20 Spectro Type-E Light fork oil for street use, or 300 cc SAE 30 Extra Heavy Duty Spectro oil for high performance and racing use.



TON PELS SIGNATURE "NAKED BUBBA" FRONT FORKS

Ton has put the Fat Bubba on a diet! The result, the Naked Bubba. Like the original Fat Bubba's they feature massive Triple Tree clamps, large diameter bottom sliders and Hidden Axle mount. Triple tree and sliders are machined from billet aluminum and have a mirror shine polished finish. The upper triple tree clamp is 1 1/8" (29 mm) thick, the lower triple tree clamp measures 1 5/16" (34 mm). The fork sliders have a very impressive diameter of 2 3/8" (60 mm) and feature fender brackets, as well as dual caliper mount. Fork sliders are topped off with billet aluminum dust covers. Conversion brackets that take 1984 thru 1999 style or 2000 to present style OEM or aftermarket brake calipers are available but must be ordered separately. Other conversion brackets must be custom made. The front wheel axle has a hidden mount for extra sleek looks. Forks are available in +3", +4", +6", +8", +12", +14" and +16" over stock FL length (actual fork leg length is also listed) and with 0, 3, and 6 degrees raked triple tree. These Fat Bubba forks come complete with 3 different fork stops to work with almost any stock or aftermarket frame. A bottle of fork oil is included with each set.

Complete Naked Bubba front forks, polished

Stock rake	+3° rake	+6° rake	
702030	702035	702040	+ 3", Fork leg length 786 mm (31")
702031	702036	702041	+ 4", Fork leg length 811 mm (32")
702032	702037	702042	+ 6", Fork leg length 862 mm (34")
702033	702038	702043	+ 8", Fork leg length 913 mm (36")
702034	702039	702044	+12", Fork leg length 1015 mm (40")
702055	702057	702059	+14", Fork leg length 1015 mm (40")
702056	702058	702060	+16", Fork leg length 1015 mm (40")

Note: Length is measured from the underside of the upper triple to the center of the wheel axle. 4" over stock FL is the same as stock FXWG.

Caliper brackets

- 735019** For 1984-1999 style calipers, fits left or right, sold each
- 735025** For 2000 to present style calipers. Left
- 735026** For 2000 to present style calipers. Right

Replacement inner tube and fork slider assemblies, per pair

- 702045** 3" Overstock
- 702046** 4" Overstock
- 702047** 6" Overstock
- 702048** 8" Overstock
- 702049** 12" Overstock
- 702061** 14" Overstock, pair
- 702062** 16" Overstock, pair

Replacement triple trees

- 702050** Stock rake
- 702051** 3 Degrees raked
- 705052** 6 Degrees raked

Replacement parts

- 740050** Fork oil seals, pair
- 702053** Replacement Billet aluminum fork boots, pair
- 702054** Replacement O-rings for fork boots, pair
- 722298** Replacement front wheel axle
- 711278** Slider bushing (OEM 45866-84)

Fork oil change: Per fork leg 300 cc 20W20 Spectro Type-E Light fork oil for street use, or 300 cc SAE 30 Extra Heavy Duty Spectro oil for high performance and racing use.



TÜV APPROVED FAT WIDE GLIDE UPSIDE DOWN FRONT FORK ASSEMBLY

These Fat Wide Glide forks are unequalled in design, style, finish and performance. They feature massive 63.5 mm chrome plated fork legs in combination with 45 mm hard chromed fork inner tubes. Fork features a velocity sensitive valve design and progressive springs. The chrome plated billet aluminum fork lowers feature a hidden mount wheel axle, bolt-on FXST type fender mounts, and bolt on brackets to take single or dual OEM or aftermarket 1984 thru 1999 style brake calipers. The Smoothly Radiused Triple trees are a massive 30 mm, thick providing The Big Fat look. Fork comes with a hidden mount fork stop for use in old style frames, as well as steer stop pins for use in 1984 thru 1999 as well as 2000 to present Softtail frames. Complete kit includes chrome triple trees, chrome Upside Down fork legs, axle and miscellaneous hardware. These great looking forks are TÜV approved.

094057 Stock 31" (787 mm) length

Note: Length is measured from the top of the upper plate to the center of the axle.

Fork oil change: Use light weight oil SAE 15, 550 cc per fork leg.



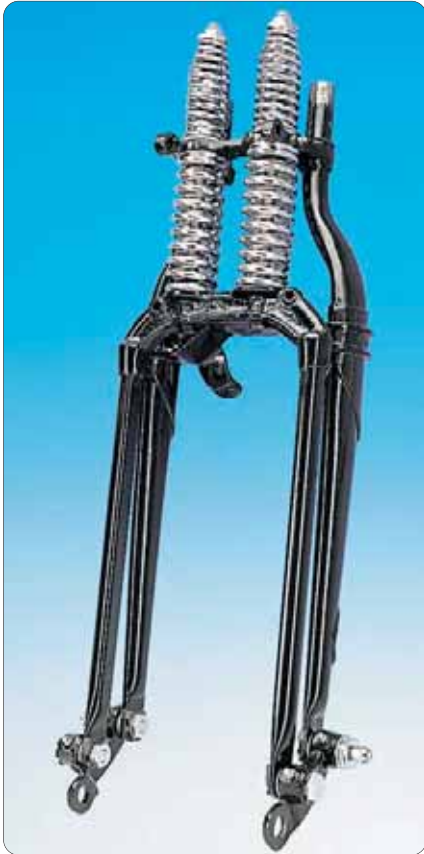
CLASSIC FL-STYLE FRONT FORK ASSEMBLY

This stock style, stock length Classic FL Wide Glide fork is assembled from top-quality parts. Comes complete with chrome plated triple tree, U.S.A. made. inner tubes and polished aluminum alloy lower fork legs that are clear lacquered for protection. The left side lower fork leg is designed to take the OEM or aftermarket "Banana Type" front brake caliper. This front fork is very attractively priced and ready to install. Fork is built to factory specifications and filled with Spectro fork oil.

232449 Classic FL-Style Front Fork Assembly

Replacement parts:

- 094014** Chrome plated steel triple tree
- 345126** Acorn stem nut
- 345125** Bearing jam nut
- 232429** Inner tubes (pair)
- 093436** Fork tube caps (pair)
- 094019** Fork springs (pair)
- 094136** Lower fork legs (pair)
- 359018** Rubber fork boots (pair)
- 242113** Damper assembly (each)



OLD STYLE SPRINGER FRONT FORKS

Exact reproduction old style Springer front fork. Available as a stock replacement all black fork set, with chrome springs, as well as a complete chrome plated version. Black and chrome plated forks are available as an "in-line" fork or as a negative "off-set" fork. Both are sold as complete fork sets ready to install. Perfect for restoring old models and building Retro Bikes. Most parts are separately available. "In-line" forks were originally made for 1936 thru 1940 Big Twin frames with 28° frame neck and 29° frame neck as used on other Big Twin models from 1941 thru 1945. Offset forks fit the 1946 thru 1948 Big Twin with the 30° frame as well as most reproduction rigid frames with stock 30° neck.

"In Line" fork set

- 720000** Black finish, Chrome springs (OEM 2601-36 & 45515-36)
- 720001** Chrome finish (OEM 2601-36C & 45515-36C)

"Off-set" fork set

- 720003** Black finish, Chrome springs (OEM 2601-46 & 45515-46)
- 720004** Chrome finish (OEM 2601-46C & 45515-46C)

Fork sets for 45 CI models, black finish with chrome springs

- 741863** Fits all 45 CI models except WLC (OEM 2602-40)
- 741864** Fits WLC and Servicar models (OEM 2602-41D)
- 741865** 2" Over stock length, fits early military WL models (OEM 2602-40M)

Parts listing, these parts can also be used to restore the Original Equipment front forks

Rear (rigid) section

- 720005** Black in-line (OEM 2604-36 & 45525-36)
- 720006** Off-set black (OEM 2604-46 & 45525-46)

Front (Springer) section

Fits Big Twins 1936 thru 1948, all WLC models and Servicars 1941 thru 1957.

- 720007** Black finish (OEM 2606-36 & 45609-36)
- 720008** Chrome finish (OEM 2606-36C & 45609-36C)

Springs, rockers, nuts, studs, etc.

- 720009** Fork spring set outer/inner chrome. Fits all 1936 thru 1957 Springer forks (OEM 2617-36).
- 720010** Spring rod, with lower nut. Fits all 1936 thru 1957 Springer forks (OEM 2631-36 & 45641-36).
- 720011** Bushing, spring rod. Fits all 1931 thru 1957 Springer forks (OEM 2632-31 & 45643-31).
- 720012** Upper flat nut for spring rod, chrome set 2. Fits all Springer forks 1930 thru 1957 (OEM 2634-30C & 45647-30).
- 720013** Top nut for spring rod top, chrome set of 2, fits all Springer forks 1936 thru 1957 (OEM 2634-36C & 45648-36).
- 720014** Complete rocker plate set. Includes bushings, bolts, washers, spacers, nuts and nut locks. Fits Big Twins 1936 thru 1948, all WLC models and Servicars 1941 thru 1957.
- 720015** Rocker plate set only. Fits all Big Twins 1930 thru 1948, all WLC models and Servicars 1941 thru 1957 (OEM 2635-30, 2636-30 & 45655-30, 45658-30).
- 720016** Rear rocker plate stud. Fits Big Twins 1931 thru 1948, all WLC models and Servicars 1941 thru 1957 (OEM 2640-31 & 45674-31).
- 720017** Front rocker plate stud. Fits Big Twins 1931 thru 1948, all WLC models and Servicars 1941 thru 1957 (OEM 2639-31 & 45673-31).
- 720018** Set of 6 lock plates. Fits Big Twins 1934 thru 1948, all WLC models and Servicars 1941 thru 1957 (OEM 2647-32, 2642-30, 2642-31A & 45683-32, 45680-30, 45681-31).
- 720019** Rocker plate stud nut, set 4. Fits Big Twins 1931 thru 1948, all WLC models and Servicars 1941 thru 1957 (OEM 2643-31 & 7908).
- 720020** Castle nut for rear stud, set of 2 (OEM 0128 & 7809).
- 720021** Rear stud spacer, set 2. Fits Big Twins 1941 thru 1948, all WLC models and Servicars 1941 thru 1957 (OEM 2644-41 & 45684-41).
- 720022** Rocker plate bushings, set of 4 (OEM 2645-30 & 45667-30).
- 720023** Rocker plate stud screw, set 2, fits Big Twins 1932 thru 1948, all WLC models and Servicars 1941 thru 1957 (OEM 2646-32 & 45682-32).
- 720026** Head cone bearing.



CUSTOM SPRINGER FORKS

These Custom made Springer forks are the "Real Thing" for those customizing their bike or building a Bobber from scratch. These in-line forks are not just copies from stock Springer forks, but completely re-designed, featuring internal rebound springs for a smooth pleasant ride, and fender mounting tabs for use with 21" wheels and fenders installed. Forks come complete with front wheel axle and nuts and have 3 3/4" rockers. Available in black powder coat finish with chrome springs, or fully chrome plated in various length from 2" under stock thru 14" over stock length in 2" increments. Stock length is 30" measured from the underside of the upper triple clamp thru the center of the front wheel axle.

Chrome Black

730160	730169	2" under stock
730161	730170	Stock 30" length
730162	730171	2" over stock
730163	730172	4" over stock
730164	730173	6" over stock
730165	730174	8" over stock
730166	730175	10" over stock
730167	730176	12" over stock
730168	730177	14" over stock



NEW

ZERO ENGINEERING MODERNIZED OLD STYLE SPRINGER FORK

Zero Engineering re-designed the old style Springer fork with state of the art needle bearings on the pivot points. Apart from this great improvement they left the design completely as it was. Forks are so-called "In-Line" type, as used in 1936 thru 1940 Big Twins with 28 degrees frame neck, as well as in 1941 thru 1945 Big Twins with 29 degrees frame neck. Forks come in stock length. They have a black finish with chrome springs and are TÜV approved. Top tree is not included but must be ordered separately.

745350 Zero Engineering Springer Fork

NEW



UPPER TRIPLE TREE CLAMPS FOR OLD STYLE IN-LINE SPRINGER FORKS

These upper triple tree clamps in combination with one of the special riser stud sets allow you to fit almost any of our risers in combination with one of our 1" or larger diameter handlebars on the Old Style in-line Springer forks. Does not fit Old Style Offset and Custom Springer forks. Triple tree clamps are available in black or chrome, riser stud sets are available for use with 1/2"-20 UNF or 1/2"-13 UNC threaded risers.

- 742387** Upper triple tree clamp, black
- 742388** Upper triple tree clamp, chrome
- 742385** Riser stud set for 1/2"-20 UNF threaded risers
- 742386** Riser stud set for 1/2"-13 UNC risers

Note: Stock style triple tree clamps with welded-on handlebars can be found in Chapter 14 of this catalog

NEW



TAURUS CUSTOM TOP TREE FOR FXSTS SPRINGER

Rebuffini's billet aluminum top fork clamp allows installation of Rebuffini's Naus Springer risers, other aftermarket handlebar risers or T-bar handlebars with 3 1/2" center distance on all 1988 to present FXSTS Springer models, including Cross Bones. Does not fit FLSTS Springer forks. CNC machined from solid billet aluminum with a polished, black anodized or chrome finish.

- 746251** Polished
- 746252** Black anodized
- 746253** Chrome



COLONY SPRINGER ROCKER REBUILT KIT

These kits contain all components needed to completely rebuild the rockers on the 1930 thru 1948 springers. All parts are identical to and interchangeable with new old stock Harley-Davidson parts.

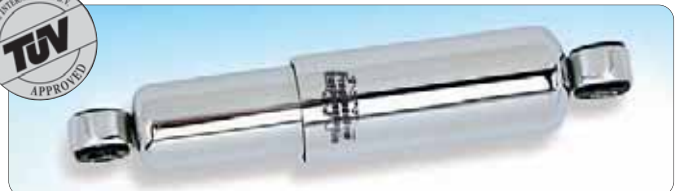
- A. 741946** Complete springer rocker rebuilt kit
- B. 741947** Front rocker stud assembly
- C. 741948** Rocker stud bushing kit
- D. 741949** Rear rocker stud assembly
- E. 741950** Rocker stud lock washers (set of 6)



FOURNALES DELTA SPRING ADJUSTABLE SHOCK DAMPER FOR LATE STYLE SPRINGER FORKS

Adjustable pressure and improved action. Now you can adjust the damping of your new style Springer front-end to your own specifications. Has smooth chrome finish and will fit all Springer models from 1988 to present.

- 237370** Shock absorber



SPRINGER DAMPER BY PROGRESSIVE SUSPENSION

Velocity sensitive damping provides superior damping performance. Damper has attractive chrome finish and comes with dual wall construction for extra durability. Fits FLSTS and FXSTS Springer models.

- 731339** Springer Damper



OLD STYLE SPRINGER FORK STEERING DAMPER 1936 THRU 1948

This simple, lever operated OEM style steering damper will take all the whip out of steering at any speed. It is particularly desirable for "high" speed riding, and for side-car use. Fits Big Twin models 1941 thru 1948 using old OEM (style) Springer forks. Available in 2 kits, model 1941 or 1946. All parts are also separately available.

Complete steering damper kits

- 720108** Fits 1941 thru 1945 frames with 29° frame neck (OEM 2776-41 & 46700-41)
- 720109** Fits 1946 thru 1948 frames with 30° frame neck (OEM 2776-46 & 46700-46)

Steering damper parts

Can also be used for restoration of OEM steering dampers.

- 720032** Lever, steering damper chrome (OEM 2778-30C & 46755-36)
- 720033** Rod only with 2782-39 (OEM 2779-41/46 & 46766-41/46)
- 720034** Screw, adjusting steering damper (OEM 2781-36 & 46757-36)
- 720035** Washer, upper small (OEM 2783-30 & 46779-30)
- 720036** Washer, adjusting (OEM 2784-30 & 46775-30)
- 720037** Washer, spider friction (OEM 6650-18 & 88936-18)
- 720038** Nut, adjusting (OEM 2785-30 & 46746-30)
- 720039** Spring release (OEM 2787-30 & 46777-30)
- 720040** Washer release spring (OEM 2788-30 & 6373)
- 720041** Washer fiber friction set of 2 (OEM 2790-30 & 46727-30)
- 720042** Disc, steel (OEM 2791-30 & 46717-30)
- 720098** Frame bracket, steering damper 1941 thru 1945 (OEM 2792-41 & 46760-41)
- 720099** Frame bracket, steering damper 1946 thru 1948 (OEM 2792-46 & 46760-46)



PRO-ONE "MILLENNIUM" BILLET CHROME FORK TUBE COVER

This chrome plated billet aluminum fork tube cover fit between the upper and lower triple tree. Chrome plated Ball Milled "Millennium" design. Sold in pairs.

- 710877** Millennium Fork Tube covers



REPLACEMENT FORK TUBES

Hard chrome replacement inner fork tubes. Fit XL models 1984 thru 1987, FXE(F) models 1984 thru 1985 and all FXR models 1984 thru 1987. Style A, 35 mm (OEM 45407-83). Sold in pairs.

- 093517** Stock length (23 1/4") (OEM 45407-83)
- 093518** 2" over stock length (OEM 45392-83)

Note: Late 1986 thru 1987 may be equipped with coarse thread tube cap bolts. Add a pair of fine threaded tube cap bolts ZPN 301119 to your order to resolve this problem.



FORK TUBE ASSEMBLIES

Zodiac offers you hassle-free fork tube assemblies. Ideal for restoration or OEM replacement. These assemblies are complete and ready to fit. Each assembly includes a hard-chromed fork tube with all internal components including damper rod, spring and cap already installed. Sold each.

Fits 1980 thru 1983 FXWG and FXDG models, Style E, 1 5/8"

- 094139** Stock length (24 7/8")
- 094208** 1" under stock length
- 094209** 2" over stock length
- 094210** 4" over stock length
- 094211** 8" over stock length
- 094189** 10" over stock length
- 094190** 12" over stock length

Fits FXWG 1984 thru 1986, FXDWG, FXST, FXSTC models 1984 to present, Style F, 1 5/8"

- 094154** Fork tube assembly (each)

Fits FLSTC Heritage Softail and FLSTF Fat Boy models 1986 to present, Style F, 1 5/8"

- 094155** Fork tube assembly (each)

AMERICAN MADE FORK TUBES

Quality is the main word used when talking about these fork tubes. Made from the best steel available and centerless ground to a perfect fit. These forks have a hard chrome finish. Spacers are provided when needed. Sold in pairs.

XLH, XLCH and XLRC models 1975 thru 1983 XLX, XLS models 1983 only and FX, FXE and FXEF models 1976 thru 1983

Style B, 35 mm (OEM 45407-75).

- 233569** Stock length (23 1/4")
- 233564** 2" under stock
- 233565** 2" over stock
- 233566** 4" over stock
- 233567** 6" over stock
- 233568** 8" over stock

XL models from 1979 thru 1982, FXS, FXB, FXR and FXRS models from 1977 thru 1983 with showa forks

Style B, 35 mm (OEM 45644-77).

- 233565** Stock length (25 1/4")
- 233564** 4" under stock
- 233569** 2" under stock
- 233566** 2" over stock
- 233567** 4" over stock
- 233568** 6" over stock

XL models (except 1992 hugger) and FXR models (except sport edition, convertible and FXRT) with showa fork from 1987 to present

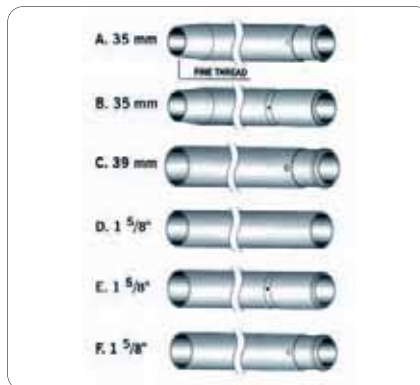
Style C, 39 mm (OEM 45381-87).

- 233574** Stock length (23 3/8")
- 233575** 2" under stock
- 233576** 2" over stock
- 233577** 4" over stock
- 233578** 6" over stock
- 233579** 8" over stock

FXRS sport edition, FXRS convertible and FXRT with showa fork from 1987 thru 1994

Style C, 39 mm (OEM 45393-87)

- 233576** Stock length (25 3/8")
- 233575** 4" under stock
- 233574** 2" under stock
- 233577** 2" over stock
- 233578** 4" over stock
- 233579** 6" over stock



FXWG, FXDG models from 1980 thru 1983

Style E, 1 5/8" (OEM 45417-80).

- 232437** Stock length (24 7/8")
- 232434** 4" under stock
- 232436** 2" under stock
- 232438** 2" over stock
- 232439** 4" over stock
- 232440** 6" over stock

FXWG 1984 thru 1986, FXDWG, FXST and FXSTC models from 1984 to present

Style F, 1 5/8" (OEM 45417-84).

- 232919** Stock length (24 1/4")
- 232920** 22 1/4" inner fork tubes for FXST models
- 232921** 2" over stock
- 232922** 4" over stock
- 232923** 6" over stock
- 232924** 8" over stock

FL models 1949-early 1977

Style D, 1 5/8" (OEM 45950-48).

- 232429** Stock length (20 1/2")
- 232431** 2" over stock
- 232432** 4" over stock
- 232433** 6" over stock

FL, FLH models late 1977-1984 FLT, FLHT models 1980-1983

Style E, 1 5/8" (OEM 45825-77A).

- 232434** Stock length (20 7/8")
- 232435** 2" under stock
- 232436** 2" over stock
- 232437** 4" over stock
- 232438** 6" over stock
- 232439** 8" over stock
- 232440** 10" over stock

FLT, FLHT and FLHS 5-speed models from 1984 to present

Style F, 1 5/8" (OEM 45827-84).

- 232441** Stock length (20 7/8")
- 232442** 2" under stock
- 232443** 2" over stock
- 232444** 4" over stock
- 232445** 6" over stock
- 232446** 8" over stock

FLSTC and FLSTF models 1986 thru 1999, FLSTN models 1993 to present

Style F, 1 5/8" (OEM 45930-86).

- 232443** Stock length (22 7/8")
- 232442** 4" under stock
- 232441** 2" under stock
- 232444** 2" over stock
- 232445** 4" over stock
- 232446** 6" over stock



CHROME PLATED BILLET FORK SLIDER KITS FOR FXST STYLE FORKS

These fork slider sets feature a flush mount wheel axle and billet fork boot caps. They are CNC-machined from billet aluminum, mirror shine polished and then high gloss chrome plated. Kits come complete with front wheel axle, chrome fork boots, chrome fender brackets, and chrome brake caliper brackets for single or dual disc applications. Available in smooth round style, smooth flatside style and groove flatside style. Fits the 1 5/8" (41.27 mm) fork tubes of the 1984 thru 1999 FX Softail, FXWG and Dyna Wide Glide models.

Note: does not include seals, clips and slider bushings.

Set L/R for single disc applications

- 094411** Smooth finish round style
- 094409** Smooth finish flatside
- 094410** Groove finish flatside

Set L/R for dual disc applications

- 094408** Smooth finish round style
- 094406** Smooth finish flatside
- 094407** Groove finish flat side

- 711279** Guide bushing (OEM 45940-84)
- 711278** Slider bushing (OEM 45866-84)
- 231184** Fork seal set (OEM)
- 750665** Oil seal clip (OEM 45842-77)



LOWER FORK LEG SETS

Lower leg sets for all Wide Glide front forks 1949 thru 1977 FL(H) and 1980 thru 1983 FXWG. FL fork leg sets are polished and clear lacquer coated, FXWG, FXST and FLST sets are available in both polished and chrome plated finish. Most sets have all bushings and late style double lip seals installed. 1949 thru 1977 FL(H) lower legs work with ZPN 242113 damper unit, while 1980 thru 1983 FXWG uses damper unit ZPN 094036. FXWG sets can be used for single or dual disc applications.

Lower Fork Leg Sets

- 094134** Left drum brake, polished, FL 1949 thru 1968 (OEM 45805-50 & 45797-50)
- 094135** Right drum brake, polished, FL 1969 thru 1971 (OEM 45801-69 & 45797-50)
- 094136** Single disc brake, polished, FL 1971 thru 1977 (OEM 45807-72 & 45797-50)
- 094148** Dual disc brake, polished, FXWG 1980 thru 1983 (OEM 45871-80 & 45872-80)
- 094146** Dual disc brake, chrome, FXWG 1980 thru 1983 (OEM 45871-80 & 45872-80)
- 094168** Single disc brake, chrome, FLSTC, FLSTF & FLSTN 1986 thru 1999 (OEM 45917-86 & 45918-86)

Individual Fork legs

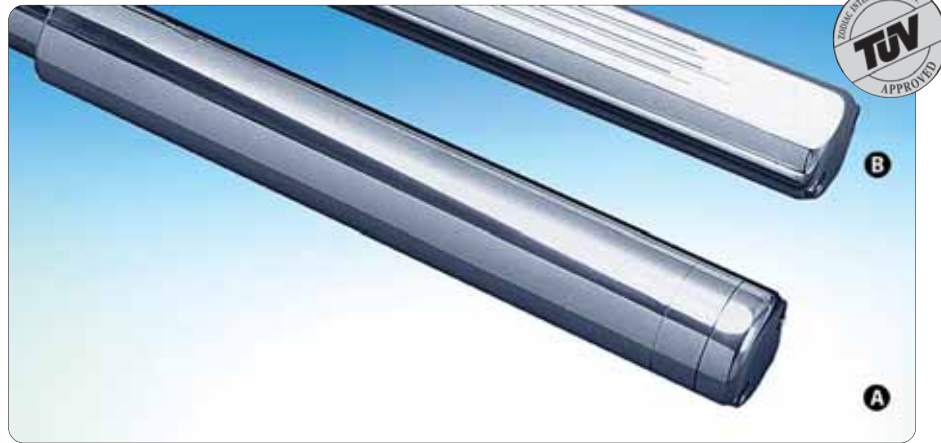
- 094127** With pinch cap, 1949 thru early 1977 models, polished (OEM 45800-50A)
- 094128** Left drum brake, 1949 thru 1968 FL models, polished (OEM 45805-50)
- 094131** Right drum brake, 1969 thru 1971 FL models, polished (OEM 45801-69)
- 094130** Left disc brake with pinch cap, 1972 thru 1977 FL models, polished (OEM 45807-72)



AXLE PINCH CAP

For 1949 to 1984 FL front axles. Polished aluminum finish (OEM 45836-48).

- 301686** Axle Pinch Cap



"TOLLE GLIDE" COMPLETE SLIDER AND TUBE KITS

The Original Tolle slider and tube sets. Nothing beats the quality of these custom made Tolle slider and tube sets. Tolle's complete sliders and tubes sets feature hidden front axle and reinforced hard chromed tubes. Hydraulics and progressive spring kit with spring pressure adjusting spacer are included. The tube diameter is the same as OEM Wide Glide fork tubes (41.27 mm). Stock length tubes are 20 3/8" (517 mm) which is the same as stock OEM tubes. The complete kit measures 27" (685 mm) from axle hole to the top. Kits are available in two different designs, Smooth or Hi-Tech and come in mirror-shine polish finish. The slider and tube sets are also available from stock in 6" and 10" oversize. If you require a different length slider and tube kit, please contact your Zodiac dealer. When specially ordered, the slider and tube kits are available from stock to +50" oversize in 1" increments. Replacement parts as well as fork related parts such as caliper brackets, fender mounts, Tweek bars etc., are also available. For details see listing below.

Note: Tolle slider and tube sets (from stock up-to + 18") are TÜV approved if used in combination with Tolle's adjustable Triple tree set.

Complete kits

A. Smooth design polished finish

- 711123** stock 27"
- 711124** +6" oversize
- 711125** +10" oversize

B. Hi-Tech design polished finish

- 711129** stock 27"
- 711130** +6" oversize
- 711131** +10" oversize

Replacement parts for complete kits

- 711141** Fork tubes only (set 2) stock
- 711119** Fork tubes only (set 2) +6"
- 711118** Fork tubes only (set 2) +10"
- 711215** Fork sliders Smooth style polished
- 711216** Fork sliders Hi-Tech style polished
- 711142** Hydraulics for sliders
- 711155** Oil seal kit (set 2)



TWEEK BARS AND SPACERS

Tweek Bars are also known as fork braces, they are strongly recommended for use with 10" or more over stock fork length. Fits with Wide Glide trees (250 mm pitch) and TolleGlide fork sliders.

- A. 711190** Tweek bar 1 piece polished
- B. 711191** Tweek bar 3 piece polished

Tweek bar spacers blocks

Use on the 3-piece Tweek bar to increase tire to bar clearance. Polished finish. Sold in pairs.

- 711192** (pair) 10 mm polished
- 711193** (pair) 25 mm polished
- 711194** (pair) 45 mm polished

Note: Tolle fork sliders are available with notched bottom for speedo drive. When ordering add ZPN 711159 for left side, ZPN 711143 for right side



FORK RELATED PARTS

Brackets for PM calipers.

- 711149** Stainless steel bracket for 2 piston PM caliper 125X2 (ZPN 721404) and 11 1/2" disc
- 711152** Polished aluminum bracket for 2 piston PM caliper 125X2 (ZPN 721404) and 8 5/8" disc
- 711151** Stainless steel bracket for 4 piston PM caliper 125X45L (ZPN 721410) and 10" disc
- 711150** Stainless steel bracket for 4 piston PM caliper 125X45L (ZPN 721410) and 11 1/2" disc

Stainless steel caliper brackets for 1984 thru 1999 style OEM, Harrison Billet & PM stock replacement calipers

- 711154** Bracket for left side stock style caliper and 10" disc
- 711167** Bracket for right side stock style caliper and 10" disc
- 711153** Bracket for stock style caliper and 11.5" disc

Axles

- 711195** Axle for Tolleglide with spacers, "hidden axle"
- 711197** Axle for Tolleglide width 220 mm
- 711198** Axle for 39 mm fork and 195 mm wide triple trees
- 711199** Axle for 39 mm fork and 220 mm wide triple trees
- 711200** Axle for 39 mm fork and 250 mm wide triple trees

Fender mounts for fork sliders Stainless steel and sold in pairs

- 711156** Fender mounts for custom fenders
- 711157** Fender mounts 1949 thru 1984 Hydra Style
- 711158** Fender mounts 1980 to present Showa Style

16



HYPERPRO "LINK SYSTEM" SUSPENSION SPRINGS

Hyperpro has put years of extensive Research & Development on front forks, shocks, springs and suspension systems. As most of the time a linear spring is either too hard or too soft at the beginning and/or at the end, a so called one-step progressive spring is an improvement, but is still a compromise between comfort and safety. The sudden change from soft to hard is often felt as a disadvantage and can lead to "speed wobbles". Hyperpro came up with the noncompromising solution: the "Link-System Curve Design" for springs. With this construction a spring can be designed to satisfy all the demands of modern motorcycle technology. Hyperpro gives you a sensitive initial part of the stroke with a smoothly increasing spring rate for safety and anti-dive at the end of the stroke. Together with the use of the highest quality materials and precision machining this results in the best springs that money can buy. The fork springs are manufactured to DIN-2095, class 1 and are specially polished for minimal friction and carry a lifetime warranty against breaking. The shock springs provide superior roadholding & handling under all conditions and are thoroughly tested on a computerized dyno and on the bike in question. They are available with a black or purple polyester surface and the same technical standards

as the fork springs. We also offer a special Combi kit, which includes a set of fork springs, a set of shock springs, one liter Hyperpro suspension-fluid, a small tube Hyperpro fork seal lubricant, and a professional manual with suspension tips.

239498 Fits FXR models with 13" shocks, purple

Hyperpro front fork springs

239490 Fits 39 mm forks on Sportster models 1988 thru 1991

239669 Fits 39 mm forks on Sportster models 1992 thru 2003

239435 Fits 39 mm forks on Sportster models 2004 to present

239491 Fits 39 mm forks on FXRS SP, Convertible, FXRT and FXRP models 1987 thru 1993 and FXDL models (except Dyna Wide Glide models)

239492 Fits 39mm forks on FXR/FXLR/FXRS models from 1987 thru 1994

239493 Fits 41 mm forks on Softail models 1984 to present and FXDWG Dyna Wide Glide models 1992 thru 2005

239432 Fits 41 mm forks on FLHR Road King models from 1992 to present

239433 Fits 39 mm forks on FXDX Super Glide Sport models 2000 thru 2005

239434 Fits 49 mm forks on all FXD models 2006 to present

Hyperpro rear shock springs

239494 Fits Softail models 1990 thru 1995

239495 Fits FXR models with 13" shocks, purple

239496 Fits FXR models with 13" shocks, black

741343 Fits Softail models 1996 thru 1999





FORK TUBE SPRINGS

These fork springs are manufactured from the finest material available and meet or exceed OEM specifications. Sold in pairs.

094019 Fork spring, fits FL front forks 1949 thru Early 1977 (OEM 46051-49A)

094034 Fork spring, fits FXWG front forks 1980 thru 1983 (OEM 46048-80)



WHITE BROS FXSTS SPRINGER FORK LOWERING KIT

This kit lowers the Springer fork ride height by 1 1/2" and is easily installed on FXSTS Springer Softtail models 1988 to present. Features shorter chrome plated springs calibrated for a lower ride height and progressively firmer action required with the shorter fork travel. Chrome plated negative spring spacers are included.

238314 FXSTS Softtail Springer Models 1988 to present

238315 Springer fork disassembly & assembly tool

Note: Does not fit FLSTS models. Springer tool is required for installation (sold separately).



'AMERICAN TUNED' FORK SPRINGS BY PROGRESSIVE SUSPENSION

These progressively-wound springs are manufactured using the finest material available and carry a Manufacturer's Lifetime Warranty against defects in materials and workmanship to the original owner. These springs eliminate front end sag, reduce nose dive under braking, improve stability and increase ride comfort. Sold in sets.

234821 Fits all 35 mm Narrow Glide forks from 1953 thru 1986

234824 Fits 39 mm Narrow Glide forks on 1988 thru 1992 FXRT models, 1987 thru 1994 FXRS(P) Convertible models and 1991 thru 2005 Dyna Glide models (except Wide Glide models)

234822 Fits 39 mm Narrow Glide forks on 1988 thru 2003 Sportster models, 1988 thru 1991 Hugger models, 1987 thru 1994 FXLR models and 1988 thru 1994 FXR/FXRS models

235006 Fits 39 mm Narrow Glide forks on 1992 thru 2003 Hugger models

741945 Fits 39 mm forks on 2004 to present Sportster models

234823 Fits 41 mm Wide Glide forks on all 1949 to present FL, FLH, FLT, 1984 to present Softtail and 1991 thru 2005 Dyna models

741908 Fits 49 mm forks on 2002 to present V-Rod models and 2006 to present Dyna models



LOW BOY FORK LOWERING KITS

The Low Boy fork lowering kits are designed to shorten the stock Harley-Davidson forks by 1 1/4" or 2" (installer choice). We feel the Low Boy design kit, using longer rebound springs (sometimes called negative springs) and shorter/stiffer fork springs offers significant advantages over the conventional lowering method of using shorter fork tubes. The advantages are: the easy installation doesn't require complete disassembly of fork, ease of travel reduction choice (1 1/4" or 2"), quick converting back to stock travel. The springs are progressively wound to complement the shorter fork travel and still deliver a compliant ride, yet resist bottoming-out point is the same as stock which will maintain the clearance between the frame and the ground.

233682 Fits 1 5/8" (41,27 mm) Showa forks on FLH/FLT models 1978 to present, FXWG models 1980 thru 1986, Softail models 1984 to present, and Dyna Wide Glide models 1992 to present

233683 Fits the 39 mm Showa forks on Sportster, FXR and Dyna Glide models from 1987 to present

233684 Fits the 35 mm Showa forks on Sportster, FX and FXR models from 1984 thru 1987



PROGRESSIVE SUSPENSION FRONT FORK LOWERING KITS

Progressive Suspension used all their experience and knowledge to give you more comfort and control over your motorcycle and still enhance looks by lowering the front end. Kits feature progressively wound springs, include the required spacers and step-by-step installation instructions. Kits for V-Rod's lower the bike 1", kits for Dyna's lower the bike 2".

741955 Fits the 49 mm forks on VRSCA, VRSCB and VRSCD-V-Rod models

742031 Fits the 49 mm forks on 2006 to present Dyna models



DAMPER KIT

Complete damper kit for all Narrow Glide front forks (Showa type) as used on 1975 thru 1979 FX and XL models. Duplication of OEM model used on 1975 thru 1979 XL and FX, but can also be used on the later 1980 thru 1984 models with 35 mm fork tubes (not on air suspension models) (OEM 45409-75).

094035 Damper kit



PROGRESSIVE SUSPENSION DAMPER RODS FOR 39 MM FORKS

The stock fork damping rods of the Original Equipment 39 mm front in Sportster and FXR models are under damped. Progressive Suspension dampers increase rebound damping and control and improve the ride. Recommended for all touring and sport riders.

234825 Damper rod set



FORK DAMPER KIT

Complete damper kit for FL wide glide forks 1977 thru 1984 (Showa) except FLT-FLHT. This unit is an exact duplicate and the materials used meet or exceed the OEM specifications. Sold each (OEM 45831-77).

094032 Fork damper kit



DAMPER TUBE SPRINGS FOR HARLEY FL-FXWG

Set of damper tube springs. Fits FL 1977 thru 1984 and FXWG 1980 thru 1983 (OEM 45855-77).

094033 Damper tube springs



FORK TUBE BAFFLE VALVE ASSEMBLY

This assembly will fit the front forks of all FL models 1949 thru early 1977 and is sold each. Accurate reproduction of all parts that went into the baffle valve and brought together as an assembly with one part number.

339094 Fork tube baffle valve



FORK DAMPER KIT

Fork damper tube assembly for FXWG 1980 thru 1983 complete with screw. Sold each (OEM 45418-80).

094036 Fork damper kit



FORK DAMPER KIT

Complete damper tube assembly as used in FXST Softail models 1984 to present, FXWG Wide Glides 1984 thru 1986, and FXDWG DynaWide Glides 1991 to present. Sold each.

094160 Fork damper assembly (OEM 45418-84)



FORK DAMPER KIT

Complete damper kit for all Wide Glides 1948 to 1977 with 1 5/8" fork tubes. Includes the entire oil shock damper valve assembly. Sold each (OEM 46161-49).

242113 Damper assembly (each)



FORK DAMPER KIT

Fork damper tube assembly for FLST models 1986 to present. Comes complete with screw and washer. Sold each (OEM 45932-86).

094161 Fork damper tube kit



FORK LEG LOWER STOP

Lower fork leg stop, fits all 1977 to present Wide Glide front forks (Showa type). Precision machined from aluminum (OEM 45834-77).

094037 Fork Leg Lower Stop



FORK SLIDER BUSHINGS

Stock replacement fork slider bushings for 39 mm Narrow Glide forks as well as the 1984 and later Wide Glide forks. We strongly advise to replace the slider bushings whenever replacing the fork seals. New bushings will prevent extreme fork seal wear. Sold in sets of 2.

Fits FXR models thru 1994, Dyna Narrow Glide models 1991 thru 2005, and Sportster models 1987 to present (39 mm forks)

711280 Upper slider bushing (OEM 45461-87)

711281 Lower slider bushing (OEM 45465-87)

Fits FLT and FLHT models 1984 to present 2007, FXST and FLST Softail models 1984 to present and Wide Glide models 1984 thru 2005 (41 mm forks)

711279 Guide bushing (OEM 45940-84)

711278 Slider bushing (OEM 45866-84)

Fits V-Rod models 2002 to present, FXCW Softail Rocker models 2008 to present, and Dyna models 2006 to present (49 mm forks)

744109 Lower slider bushings (OEM 46080-01)

744123 Upper slider bushings (OEM 46516-01)



SLIDER BUSHINGS

Upper and lower fork slider bushing for all Harley Wide Glide forks 1949 thru 1977. Bushings are of correct rolled type, steel black and bronze interior facing. Sizes are within OEM specifications. Lower bushing has extra spiral oil groove for additional lubrication.

053040 Upper fork bushing (OEM 45824-49)

053038 Lower fork bushing (OEM 45823-49)



FRONT FORK DRAIN SCREW KITS

Made by James Gaskets and available for various applications. Kits contain 2 drain screws and 2 washers.

Fits 35 and 39 mm forks on 1973 to present XL, 1976 thru 1983 FX, 1987 thru 1994 FXR and 1991 thru 2005 FXD (OEM 45790-80 & 45996-73)

740601 With chrome allen button head screws and bonded sealing washers

Fits 39 mm forks on 1973 to present Sportster, 1978 thru 1986 FX, 1994 thru 2005 Dyna Narrow Glide and 41 mm forks on 2000 thru 2007 Deuce (OEM 45403-75 & 45996-73)

742464 With zinc phillips screws and copper washers

742465 With chrome allen socket head screws and bonded sealing washers

Fits 41 mm forks on 1977 to present Touring models, 1980 thru 1986 FXWG, 1987 to present Softail (except Deuce) and 1993 thru 2005 Dyna Wide Glide (OEM 45406-75 & 45858-77)

740602 With chrome allen button head screws and bonded sealing washers

STEERING STABILIZER KIT

A ready to bolt-on steering stabilizer kit that will drastically reduce the risk of a "speed wobble". The guys that make this kit guarantee a smooth ride on high speed straights and will stabilize your motorcycle in fast corners. These stabilizers are fully adjustable by a simple turn of the knob. Kits come complete with all heim joints, brackets, hardware and detailed instructions. A must for High Performance bikes. Kits are available for Evolution Sportster models 1987 to present with 39 mm forks, FXST Softail models 1984 thru 1999 and FXST Softail models 2000 to present.



231990 Fits Sportster models 1987 thru 2003



231988 Fits Sportster models 2004 to present



231989 Fits FXST Softail models 1984 thru 1999



236272 Fits FXST Softail models 2000 to present

Steering Dampers/Triple Trees



ALUMINUM STEERING DAMPERS BY HYPERPRO

More and more Harley riders like to improve the performance of their motorcycle and ride them at higher speeds. But Harley-Davidson's are not build for high speed use. They want to break out in long, fast corners and start "Tail Snaking" when driving at high speed. Usually this is caused by instability of the steering. The use of the Hyperpro steering damper will drastically improve the stability and handling of your motorcycle. Highly recommended for all High Performance motorcycles and mandatory for racing. These Hyperpro steering dampers can be used on most models, but due to the variety of models no mounting brackets are included, but must be custom made. We strongly advise you to have your steering damper installed by a qualified mechanic. Dampers are available in black and Hyperpro racing purple. Dampers with 140 mm stroke can be used on most models, except Sportster models, these require 160 mm stroke. Matching gold anodized lightweight aluminum frame and fork clamps are available in 6 different sizes.

Steering dampers including damper clamp ZPN

700749, 140 mm stroke

239431 Steering damper, black

239430 Steering damper, Hyperpro purple

Steering dampers without damper clamp, 160 mm stroke

700891 Steering damper, Hyperpro purple

700993 Steering damper, black

Fork clamps

700742 Fork clamp 39 mm

700740 Fork clamp 41 mm

700741 Fork clamp 43 mm

700743 Fork clamp 50 mm

700744 Fork clamp 51 mm

700745 Fork clamp 52 mm

700746 Fork clamp 54 mm

Damper clamp

700749 Damper clamp (28.6 mm)



HYPERPRO STEERING DAMPER

Top quality, fully adjustable steering damper, ready to bolt on all 1986 to present Evolution Sportster models with 39 mm forks. A must for fast riders that want to reduce the risk of "speed wobbles" drastically. Apart from being adjustable, Hyperpro steering dampers feature an active speed sensitive damping system. The steering damper has an anodized aluminum body in your choice of Hyperpro-purple or black. Mounting brackets are made from billet aluminum with an anodized finish. Steering damper and mounting kit are sold separately.

700891 Steering damper, Hyperpro purple

700993 Steering damper, black

700890 Mounting kit for 1986 to present Sportster model



PRO-ONE FATREE TRIPLE TREE

The Fatree triple tree gives that real fat-n-low look. Lowers the front of your bike 3/4" using stock fork tubes. Chrome plated billet aluminum fork brackets are machined from solid T6 alloy. The stainless steel bolts are installed from the bottom for a super clean appearance and there is even no visible steering stem nut. Steering stem and fork stops are stainless steel too. The Fatree can be installed on traditional choppers as well on high-tech show bikes. Accepts Wide Glide style 41 mm fork tubes.

239895 Fatree triple tree kit



DELUXE WIDE GLIDE CONVERSION KITS

These kits are the absolute ultimate to convert your 1977 thru 1999 Narrow Glide front to the look of the Wide Glide. Each kit contains: chrome, forged triple tree set with lower clamp cover, chrome headlight mount, special chrome fork tube plugs, chrome fork stop, chrome stem nut, chrome axle and axle spacer and chrome fender spacers to permit the use of your stock fender. The 1977 thru 1983 dual disc kit includes two chrome rotor spacers with mounting hardware, while the other kits include one rotor spacer and a chrome hub cap for the right side. These kits are complete with everything you need to convert the Narrow-end to the Wide Glide. For 1984 and later dual disc applications an extra disc spacer kit must be ordered separately. Kits have 2 degrees negative rake (on some XL models spacing of the neck post may be needed).

093512 Fits FX models 1977 thru 1983 and XL models 1982 thru 1983 with dual disc

093522 Fit all Sportster and FXR models (except FXLR) with 39 mm fork tubes 1987 thru 1999

093480 Disc spacer for kit ZPN 093511 (35 mm Showa forks) models 1984 thru 1987

093482 Disc spacer for kit ZPN 093522 (39 mm Showa forks) models from 1987 thru 1999



REV"O"LUTION II BILLET ALUMINUM TRIPLE TREE SET FOR FL AND FXWG MODELS

Zodiac's lightweight Rev"O'lution II triple trees are manufactured from 1" thick (25 mm) billet aircraft quality aluminum. Top and bottom plate have rounded top edges and machined recesses for lightness and style. Kit includes an aluminum bottom mount headlight bracket and all mounting hardware. All aluminum parts in these kits have a fine machined finish to create that High-Tech racers look. This is guaranteed the finest you can buy. Fits all Big Twin Wide Glide front ends as used in FL, FXWG and FXST models from 1949 to present.

234057 Billet aluminum triple tree set

Note: Handlebar mounting rubbers and bushings must be shortened for correct fit.



16

REV"O"LUTION RADIUS DELUXE TRIPLE TREES FOR FL, FXWG AND FXST MODELS

These billet triple trees are manufactured from high quality aircraft aluminum. The "Beefy" top and bottom fork plates are 25 mm thick and have a mirror shine polished finish. Available in either stock or 3 degree raked version. The 3 degree raked version allows to fit 4 to 6 inch (10 to 15 cm) extended fork tubes, which will give your front end those special "Stretched Looks". Kits include show chrome stem nut, head lamp bracket and fork tube spacers to fit all FL, FXWG and FXST models with Wide Glide front ends.

732105 Stock rake

732106 3 degrees over stock rake



REV"O"LUTION WIDE GLIDE KIT FOR FX, AND SPORTSTER MODELS

These mirror polished aluminum kits will convert your narrow front end into the "Beefy" looking Wide Glide Style. Available in stock, 3 degrees and 6 degrees rake. Raked kits allow the use of 4 to 10 inch (10 to 25 cm) over-stock fork tubes, still keeping the bottom frame tube level with the ground, giving your bike that extended look. Kits are made from billet aircraft quality aluminum and include all necessary hardware. Available in versions, one fits the 1977 thru 1986 FX models with 35 mm fork tubes, includes two disc spacers (can also be used for Sportster models if steering stop is modified and neck post is spaced to correct length), the second is to fit FXR, Dyna Glide and Sportster models with 39 mm fork tubes 1987 thru 1999 (except FXLR models), and includes one disc spacer. When installed on a dual disc models with 39 mm forks, an extra disc spacer kit must be used.

Fits FX models 1977 thru 1986

- 233100** Complete kit, stock rake
- 233101** Complete kit, 3 degrees rake
- 233119** Repl. disk spacer kit for 1 disk
- 733106** Replacement wheel axle

Note: Will not fit models with air supported forks.

Fits FXR models 1987 thru 1994, Dyna Glide 1990 thru 1999 and Sportster models 1987 thru 1999

- 233103** Complete kit, stock rake
- 233104** Complete kit, 3 degrees rake
- 233112** Complete kit, 6 degrees rake
- 233110** Disc spacer kit, for double disc application
- 733105** Replacement wheel axle

Note: If retaining stock fender, spacers will be required.



REV"O"LUTION II WIDE GLIDE KIT FOR SPORTSTER, DYNA & FXR MODELS

Zodiac's light weight series II triple trees are manufactured from 1" thick (25 mm) billet aircraft quality aluminum. Top and bottom plate have rounded top edges and machined recesses for lightness and style. Kit includes an aluminum bottom mount head light bracket, disc spacer kit and all mounting hardware. All aluminum parts in these kits have a fine machined finish to create that High-Tech racers look. This is guaranteed the finest you can buy. Fits all FXR, Dyna and Sportster models with 39 mm Showa front forks and single disc. If front end is converted to double disc front brake, an extra disc spacer is needed.

Fits FXR models 1987 thru 1994, Dyna models 1994 thru 1999, and Sportster models 1987 thru 1999

- 234058** Complete kit
- 233110** Fits 1987 thru 1999 models

Fits Sportster 2000 thru 2007 and Dyna models 2000 thru 2003

- 734058** Complete kit
- 733110** Disc spacer kit for dual disc applications

Fits Dyna models 2004 thru 2005

- 734061** Complete kit
- 733110** Disc spacer kit for dual disc applications

ALLEN HEAD CHROME TRIPLE TREE PINCH BOLTS

Use these beautiful show chrome allen bolts to replace the stock zinc plated bolts when not using the lower triple tree cover. These bolts also work with our stock replacement triple trees. Available for 39 mm and 41 mm forks.

- 720238** Triple tree pinch bolts for 39 mm forks on 1984 thru 1994 FXR, 1991 thru 1996 Dyna, and 1987 to present Sportster, knurled allen heads
- 233134** Triple tree pinch bolts 1976 thru 1986 FX models except 1984 thru 1986 Softail models, knurled allen heads with lock washers



16



FAT PLATE REV"O" LUTION WIDE GLIDE KIT FOR FX, FXR, DYNA AND SPORTSTER MODELS

These mirror polished aluminum kits have the same features as our other Rev"O" lution Wide Glide kits but as an extra they feature "extra thick" 25 mm top and bottom plates. Available in stock, 3 degrees and 6 degrees rake. Raked kits allow the use of 4 to 10 inch (10 to 25 cm) over-stock fork tubes, still keeping the bottom frame tube level with the ground, giving your bike that extended look. Machined from billet aircraft quality aluminum and include all necessary hardware. Available in two versions, one fits the 1977 thru 1986 FX models with 35 mm fork tubes and includes two disc spacers (can also be used for Sportster models if steering stop is modified and neck post is spaced to correct length). The other fits FXR Sportster and Dyna Glide models with 39 mm fork tubes 1987 to present (except FXLR models). The 1987 thru 1999 kits use a different disc spacer than the 2000 and later models. For dual disc applications order one extra spacer.

Note: If retaining stock fender, spacers will be required. Fits FX models 1977 thru 1986

Fits FX models 1977 thru 1986

- 732100** Complete kit, stock rake
- 732101** Complete kit, 3 degrees rake
- 233119** Disc spacer kit
- 733106** Replacement wheel axle

Fits FXR models 1987 thru 1994 and Sportster models 1987 thru 1999 (does not fit FXLR models) and Dyna models 1990 thru 1999

- 732103** Complete kit, stock rake
- 732104** Complete kit, 3 degrees rake
- 732112** Complete kit, 6 degrees rake
- 233110** Fits 1987 thru 1999 models
- 733105** Replacement wheel axle

Fits Sportster models 2000 thru 2007 and Dyna models 2000 thru 2003

- 733103** Complete kit, stock rake
- 733104** Complete kit, 3 degrees rake
- 733112** Complete kit, 6 degrees rake
- 733110** Disc spacer kit for dual disc applications
- 733105** Replacement wheel axle

Fits XL Sportster models 2008 to present

- 733132** Complete kit, stock rake
- 733133** Complete kit, 3 degrees rake
- 733134** Complete kit, 6 degrees rake
- 733110** Disc spacer kit for dual disc applications
- 735034** Replacement wheel axle

Fits Dyna models 2004 thru 2005

- 733108** Complete kit, stock rake
- 733109** Complete kit, 3 degrees rake
- 733111** Complete kit, 6 degrees rake
- 733110** Disc spacer kit for dual disc applications
- 735024** Replacement wheel axle



MÜLLER BOB STYLE TRIPLE TREES

Beautiful design and excellent detail are what these triple trees make standing out. CNC machined from more than 1 9/16" (40 mm) thick aluminum billet, the famous Street Bob style has an almost regal streak, with the clean billet tube plugs literally crowning your front fork. These tube plugs also feature internal adjusting bolts, allow you to change the front fork spring pre-load setting from 0 up to 20 mm. These triple trees are available with either 0 or 5 degrees rake and have a center to center distance of 250 mm. Multiple discrete channels and holes allow for near invisible processing of wires and cables. Fork stop and lock works the same as OEM forks. Müller triple trees are available for most Sportster, Dyna and Softail models in your choice of black anodized or high luster polished finish. Kits come complete with hardware. When required, one disc brake rotor spacer is included. For dual disc applications an extra disc brake rotor spacer must be ordered separately.



Fits 39 mm front forks on 1987 thru 1994 FXR, 1991 thru 1999 Dyna (except FXDS), and 1987 thru 1999 Sportster (except Hugger)

- 744300** Polished, 0 degrees raked
- 744301** Polished, 5 degrees raked
- 744314** Black, 0 degrees raked
- 744315** Black, 5 degrees raked

Fits 39 mm front forks on 2000 thru 2003 Dyna (except FXDS), and 2000 thru 2003 Sportster (except Hugger)

- 744302** Polished, 0 degrees raked
- 744303** Polished, 5 degrees raked
- 744316** Black, 0 degrees raked
- 744317** Black, 5 degrees raked

Fits 39 mm front forks on 2004 to present Sportster (except Hugger)

- 744304** Polished, 0 degrees raked
- 744305** Polished, 5 degrees raked
- 744318** Black, 0 degrees raked
- 744319** Black, 5 degrees raked

Fits 39 mm front forks on 2004 thru 2005 Dyna

- 744306** Polished, 0 degrees raked
- 744307** Polished, 5 degrees raked
- 744320** Black, 0 degrees raked
- 744321** Black, 5 degrees raked

Fits 49 mm front forks on 2006 to present Dyna

- 744308** Polished, 0 degrees raked
- 744309** Polished, 5 degrees raked
- 744322** Black, 0 degrees raked
- 744323** Black, 5 degrees raked

Fits 41 mm front forks on 1984 thru 1999 Softail

- 744310** Polished, 0 degrees raked
- 744311** Polished, 5 degrees raked
- 744324** Black, 0 degrees raked
- 744325** Black, 5 degrees raked

Fits 41 mm front forks on 2000 thru 2006 Softail

- 744312** Polished, 0 degrees raked
- 744313** Polished, 5 degrees raked
- 744326** Black, 0 degrees raked
- 744327** Black, 5 degrees raked

Optional disc spacer kits for dual disc applications

- 233110** Fits 1987 thru 1999 models
- 733110** Disc spacer kit for dual disc applications



CHROME TRIPLE TREE SETS FOR HERITAGE SOFTAIL AND FAT BOY MODELS

These chrome plated triple tree sets are perfect for crash repairs or restoration jobs as they are fully interchangeable with stock trees. Fits Heritage Softail 1986 to present and Fat Boy models 1986 to present.

- 094043** Chrome plated steel triple tree



CHROME PLATED CONTOURED SMOOTH TOP BILLET ALUMINUM TRIPLE TREES FOR WIDE GLIDE FORK LEGS

These custom style contoured triple trees are CNC machined from billet aluminum, then mirror polished and triple chrome plated for the ultimate Custom Look. But that's not all, they also feature a "smooth top" stem nut system for the cleanest looking top clamp. The steering head bearings are adjusted from the bottom. The bottom headlight mount is an integrated part of the bottom clamp. Has removable fork stops to protect tank and paint. Comes complete with handlebar dampers and washers. Works with most stock or aftermarket frames from 1949 to present in combination with 1 5/8" (41.27 mm) fork legs.

094069 Smooth Top Contour billet aluminum triple tree



FORK CLAMP SET

These fork clamp sets are available in a straight version as well as a version with 2 degrees NEGATIVE rake as used on early models Wide Glide forks. Both models fit Big Twin models 1949 to present. Use OEM 56153-73 or Zodiac handlebar bushings (ZPN 358242 or 358267). Chrome finish.

094015 Clamp set with negative rake (OEM 45700-48 & 56121-48)

094014 Clamp set straight (not raked)



NEW



REBUFFINI PAN TRIPLE TREES FOR WIDE GLIDE FORK LEGS

Rebuffini's Pan triple trees are, just as their Leda trees, 34 mm thick solid billet aluminum, but feature even more sleek looking lines and smooth grooves. These trees fit most 1949 to present stock and aftermarket Big Twin frames and 1 5/8" fork tubes, commonly referred to as 41 mm, but in fact 41.275 mm. They come in 0 or 6 degrees and feature a slot in the top tree to route throttle and clutch cables. The steer stem has a slot for the stock steering lock. The stock rubber handlebar mounting bushes must be shortened by 6 mm or you can use the optional rubber or rigid mount handlebar bushings. Kits include a chrome wheel axle, a mounting block for a bottom mount headlight and required mounting hardware.

Polished Black	Chrome	
746268	746269	746270 0 degrees raked
746271	746272	746273 6 degrees raked



Accessories

- 746332** Chrome steering head bearing dust shield set
- 746314** Handlebar damper kit for stock risers
- 746315** Handlebar damper kit for Rebuffini risers
- 746316** Polished solid handlebar mount kit
- 746317** Black solid handlebar mount kit

NEW



REBUFFINI LEDA TRIPLE TREES FOR WIDE GLIDE FORK LEGS

Rebuffini Leda triple trees are 34 mm thick solid billet aluminum with smooth fluent looks. These trees fit most 1949 to present stock and aftermarket Big Twin frames and 1 5/8" fork tubes. They come in 0 or 6 degrees and feature a slot in the top tree to route throttle and clutch cables. The steering stem has a slot for the stock steering lock. The stock rubber handlebar mounting bushes must be shortened by 6 mm or you can use the optional rubber or rigid mount handlebar bushings. Kits include a chrome wheel axle, a mounting block for a bottom mount headlight and required mounting hardware.

Polished	Black	Chrome	
746304	746305	746306	0 degrees raked
746307	746308	746309	6 degrees raked

Accessories

746332	Chrome steering head bearing dust shield set
746314	Handlebar damper kit for stock risers
746315	Handlebar damper kit for Rebuffini risers
746316	Polished solid handlebar mount kit
746317	Black solid handlebar mount kit

NEW



REBUFFINI NEW MIRA TRIPLE TREES FOR DYNA MODELS WITH 49 MM FORKS

Rebuffini's New Mira triple trees are CNC machined from high quality billet aluminum with a 34 mm thick top plate and a 56 mm thick lower plate. These wider-than-stock trees increase the fork tube pitch to an impressive 252 mm. Trees bolt straight into 2006 to present Dyna models and take the stock 49 mm diameter fork tubes. Trees are, like stock, 0 degrees raked and feature a slot in the top tree to route throttle and clutch cables. The steer stem has a slot for the stock steering lock. Kits include a chrome wheel axle, a mounting block for the headlight, fender spacers, brake rotor spacer and required mounting hardware. Handlebar mounting rubbers must be shortened or a Rebuffini handlebar damper kit must be ordered separately. It is strongly recommended to use the Rebuffini solid handlebar mount kit when used with Apehangers or high risers. New Mira triple tree kits are available in chrome, black anodized or high luster polished.

Polished	Black	Chrome	
746434	746435	746436	Fits 2006 thru 2007 FXDB, FXDL and FXDC Dyna
746437	746438	746439	Fits 2008 to present FXDB, FXDL and FXDC Dyna
746314	Handlebar damper kit for stock risers		
746315	Handlebar damper kit for Rebuffini risers		
746316	Polished solid handlebar mount kit		
746317	Black solid handlebar mount kit		



NEW



REBUFFINI IADI ADJUSTABLE TRIPLE TREES

Rebuffini IADI triple trees have an adjustable rake from 0 up to 10 degrees in 2 degrees increments. Adjustable rake is great for custom builds or when you change fork length and/or front wheel size and still want a proper handling motorcycle. This is because changing the rake will also change the trail of your front end. When the trail is to big your bike will perfectly go straight, but it will be very hard to change direction. When the trail is to small your bike will drop into corners but it will be hard to drive straight, especially at higher speeds. Thus a correct trail is essential to get a good handling bike. Upper and lower triple tree plates are 34 mm thick CNC machined billet aluminum. Available for all 39 mm forks as used in XL, FXR and Dyna models from 1988 to present, as well as for 41 mm forks as used in 1949 to present Big Twins. Trees are 252 mm pitch Wide Glide width. All versions feature a slot in the top tree to route throttle and clutch cables and are drilled for rigid mount handlebar clamps. Kits for 39 mm forks include a chrome wheel axle, one disc brake rotor spacer in black or polished, a mounting block for a bottom mount headlight, fender spacers and required mounting hardware. Dual disc applications require the separate purchase of one extra brake rotor spacer. Kits for 41 mm forks are to be used with stock wheel axle.

IADI adjustable rake Wide Glide triple trees for 39 mm forks

Polished	Black	Chrome	
746274	746275	746276	Fits XL, FXR and FXD 1988 thru 1999
746277	746278	746279	Fits XL and FXD 2000 thru 2003
746371	746372	746373	Fits XL 2004 thru 2007
746374	746375	746376	Fits FXD 2004 thru 2005
746377	746378	746379	Fits XL 2008 to present

IADI adjustable rake Wide Glide triple trees for 41 mm forks

Polished	Black	Chrome	
746280	746281	746282	Fits most 1949 to present Big Twin

Accessories

746332 Chrome steering head bearing dust shield set

Optional Wide Glide disc spacers for dual disc applications

Polished	Black	
746260	746773	Fits 1988 thru 1999 XL, FXR and FXD
746267	746774	Fits wire wheels on 2000 thru 2007 XL and 2000 thru 2003 FXD
746345	746775	Fits cast wheels on 2000 thru 2007 XL and 2000 thru 2003 FXD
746311	746776	Fits wire wheels on 2008 to present XL and 2004 thru 2005 FXD
746346	746777	Fits cast wheels on 2008 to present XL and 2004 thru 2005 FXD

NEW



REBUFFINI PAN TRIPLE TREES FOR SPORTSTER, FXR AND DYNA

Rebuffini's Pan triple trees are, just as their Leda triple trees, 34 mm thick solid billet aluminum but feature even more sleek fluent lines and smooth grooved accents. They are available for all XL, FXR and Dyna models with 39 mm fork tubes from 1988 to present. They come in 0 or 4 degrees raked and as Mid Glide with 222 mm fork tube pitch or as Wide Glide with 252 mm fork tube pitch. All versions feature a slot in the top tree to route throttle and clutch cables. The trees for Sportster and Dyna models work with the stock steering lock. The stock rubber handlebar mounting bushes must be shortened by 6 mm or you can use the optional rigid mount handlebar bushings. Kits include a chrome wheel axle, one disc brake rotor spacer in black or polished, a mounting block for a bottom mount headlight, fender spacers and required mounting hardware. Dual disc applications require the separate purchase of one extra brake rotor spacer. An optional headlight mount for the stock top-tree mounted headlight is available separately.

Pan Mid Glide triple trees, 0 degrees raked

Polished	Black	Chrome	
746283	746284	746285	Fits XL, FXR and FXD 1988 thru 1999
746289	746290	746291	Fits XL and FXD 2000 thru 2003
746380	746381	746382	Fits XL 2004 thru 2007, requires separate purchase of ZPN 747316 or 747317 solid mount handlebar kit
746386	746387	746388	Fits FXD 2004 thru 2005
746392	746393	746394	Fits XL 2008 to present, requires separate purchase of ZPN 747316 or 747317 solid mount handlebar kit

Pan Mid Glide triple trees, 4 degrees raked

Polished	Black	Chrome	
746286	746287	746288	Fits XL, FXR and FXD 1988 thru 1999
746292	746293	746294	Fits XL and FXD 2000 thru 2003
746383	746384	746385	Fits XL 2004 thru 2007, requires separate purchase of ZPN 747316 or 747317 solid mount handlebar kit
746389	746390	746391	Fits FXD 2004 thru 2005
746395	746396	746397	Fits XL 2008 to present, requires separate purchase of ZPN 747316 or 747317 solid mount handlebar kit

Pan Wide Glide triple trees, 0 degrees raked

Polished	Black	Chrome	
746254	746255	746256	Fits XL, FXR and FXD 1988 thru 1999
746261	746262	746263	Fits XL and FXD 2000 thru 2003
746353	746354	746355	Fits XL 2004 thru 2007, requires separate purchase of ZPN 747316 or 747317 solid mount handlebar kit
746359	746360	746361	Fits FXD 2004 thru 2005
746365	746366	746367	Fits XL 2008 to present, requires separate purchase of ZPN 747316 or 747317 solid mount handlebar kit

Pan Wide Glide triple trees, 4 degrees raked

Polished	Black	Chrome	
746257	746258	746259	Fits XL, FXR and FXD 1988 thru 1999
746264	746265	746266	Fits XL and FXD 2000 thru 2003
746356	746357	746358	Fits XL 2004 thru 2007, requires separate purchase of ZPN 747316 or 747317 solid mount handlebar kit
746362	746363	746364	Fits FXD 2004 thru 2005
746368	746369	746370	Fits XL 2008 to present, requires separate purchase of ZPN 747316 or 747317 solid mount handlebar kit



NEW

Accessories

- 746312** Polished mount for stock top-tree mounted headlights
- 746313** Black mount for stock top-tree mounted headlights
- 746332** Chrome steering head bearing dust shield set
- 746314** Optional handlebar damper kit
- 746315** Handlebar damper kit for Rebuffini risers
- 746316** Polished solid handlebar mount kit
- 746317** Black solid handlebar mount kit

Mid Glide disc spacers

Polished Black

- 746295 746768** Fits 1988 thru 1999 XL, FXR and FXD
- 746296 746769** Fits wire wheels on 2000 thru 2007 XL and 2000 thru 2003 FXD
- 746347 746770** Fits cast wheels on 2000 thru 2007 XL and 2000 thru 2003 FXD
- 746310 746771** Fits wire wheels on 2008 to present XL and 2004 thru 2005 FXD
- 746348 746772** Fits cast wheels on 2008 to present XL and 2004 thru 2005 FXD

Wide Glide disc spacers

Polished Black

- 746260 746773** Fits 1988 thru 1999 XL, FXR and FXD
- 746267 746774** Fits wire wheels on 2000 thru 2007 XL and 2000 thru 2003 FXD
- 746345 746775** Fits cast wheels on 2000 thru 2007 XL and 2000 thru 2003 FXD
- 746311 746776** Fits wire wheels on 2008 to present XL and 2004 thru 2005 FXD
- 746346 746777** Fits cast wheels on 2008 to present XL and 2004 thru 2005 FXD

REBUFFINI ROCK TRIPLE TREES FOR ROCKER MODELS

Rebuffini's Rock triple trees are a true masterpiece. CNC machined from high quality billet aluminum with a 34 mm thick top plate and a 56 mm thick lower plate and increase the fork tube pitch to an impressive 252 mm. These triple trees bolt straight into 2008 to present Rocker and Rocker-C models and take the stock 49 mm diameter fork tubes. Trees are, like stock, 0 degrees raked and feature a slot in the top tree to route throttle and clutch cables. The steering stem has a slot for the stock steering lock. Kits include a chrome wheel axle, a mounting block for the headlight, fender spacer, brake rotor and required mounting hardware. Handlebar mounting rubbers must be shortened or the Rebuffini handlebar damper kit must be ordered separately. Available in chrome, black anodized or high luster polished.

Polished Black Chrome

- 746440 746441 746442** 0 degrees raked
- 746314** Optional handlebar damper kit



NEW



REBUFFINI LEDA TRIPLE TREES FOR SPORTSTER, FXR AND DYNA

Rebuffini Leda triple trees are 34 mm thick solid billet aluminum with smooth fluent looks. They are available for all XL, FXR and Dyna models with 39 mm fork tubes from 1988 to present. They come in 0 or 4 degrees raked and as Mid Glide with 222 mm fork tube pitch or as Wide Glide with 252 mm fork tube pitch. All versions feature a slot in the top tree to route throttle and clutch cables. The trees for Sportster and Dyna models work with the stock steering lock. The stock rubber handlebar mounting bushes must be shortened by 6 mm or you can use the optional rigid mount handlebar bushings. Kits include a chrome wheel axle, one disc brake rotor spacer in black or polished, a mounting block for a bottom mount headlight, fender spacers and required mounting hardware. Dual disc applications require the separate purchase of one extra brake rotor spacer. An optional headlight mount for the stock top-tree mounted headlight is available separately.

Leda Mid Glide triple trees, 0 degrees raked

Polished	Black	Chrome	
746333	746334	746335	Fits XL, FXR and FXD 1988 thru 1999
746339	746340	746341	Fits XL and FXD 2000 thru 2003
746416	746417	746418	Fits XL 2004 thru 2007, requires separate purchase of ZPN 747316 or 747317 solid mount handlebar kit
746422	746423	746424	Fits FXD 2004 thru 2005
746428	746429	746430	Fits XL 2008 to present, requires separate purchase of ZPN 747316 or 747317 solid mount handlebar kit

Leda Mid Glide triple trees, 4 degrees raked

Polished	Black	Chrome	
746336	746337	746338	Fits XL, FXR and FXD 1988 thru 1999
746342	746343	746344	Fits XL and FXD 2000 thru 2003
746419	746420	746421	Fits XL 2004 thru 2007, requires separate purchase of ZPN 747316 or 747317 solid mount handlebar kit
746425	746426	746427	Fits FXD 2004 thru 2005
746431	746432	746433	Fits XL 2008 to present, requires separate purchase of ZPN 747316 or 747317 solid mount handlebar kit

Leda Wide Glide triple trees, 0 degrees raked

Polished	Black	Chrome	
746318	746319	746320	Fits XL, FXR and FXD 1988 thru 1999
746324	746325	746326	Fits XL and FXD 2000 thru 2003
746398	746399	746400	Fits XL 2004 thru 2007, requires separate purchase of ZPN 747316 or 747317 solid mount handlebar kit
746404	746405	746406	Fits FXD 2004 thru 2005
746410	746411	746412	Fits XL 2008 to present, requires separate purchase of ZPN 747316 or 747317 solid mount handlebar kit



Leda Wide Glide triple trees, 4 degrees raked

Polished	Black	Chrome	
746321	746322	746323	Fits XL, FXR and FXD 1988 thru 1999
746327	746328	746329	Fits XL and FXD 2000 thru 2003
746401	746402	746403	Fits XL 2004 thru 2007, requires separate purchase of ZPN 747316 or 747317 solid mount handlebar kit
746407	746408	746409	Fits FXD 2004 thru 2005
746413	746414	746415	Fits XL 2008 to present, requires separate purchase of ZPN 747316 or 747317 solid mount handlebar kit



Accessories

746312	Polished mount for stock top-tree mounted headlights
746313	Black mount for stock top-tree mounted headlights
746332	Chrome steering head bearing dust shield set
746314	Handlebar damper kit for stock risers
746315	Handlebar damper kit for Rebuffini risers
746316	Polished solid handlebar mount kit
746317	Black solid handlebar mount kit

Mid Glide disc spacers

Polished	Black	
746295	746768	Fits 1988 thru 1999 XL, FXR and FXD
746296	746769	Fits wire wheels on 2000 thru 2007 XL and 2000 thru 2003 FXD
746347	746770	Fits cast wheels on 2000 thru 2007 XL and 2000 thru 2003 FXD
746310	746771	Fits wire wheels on 2008 to present XL and 2004 thru 2005 FXD
746348	746772	Fits cast wheels on 2008 to present XL and 2004 thru 2005 FXD

Wide Glide disc spacers

Polished	Black	
746260	746773	Fits 1988 thru 1999 XL, FXR and FXD
746267	746774	Fits wire wheels on 2000 thru 2007 XL and 2000 thru 2003 FXD
746345	746775	Fits cast wheels on 2000 thru 2007 XL and 2000 thru 2003 FXD
746311	746776	Fits wire wheels on 2008 to present XL and 2004 thru 2005 FXD
746346	746777	Fits cast wheels on 2008 to present XL and 2004 thru 2005 FXD

NEW



REPLACEMENT WHEEL AXLES FOR REBUFFINI TREES

An accident may cause a bent in your fork tubes but may coincidentally bent the front wheel axle too. Stock replacement wheel axles can be found in Chapter 11 of the Zodiac Bikers Book, but what to do when you have a set of Rebuffini triple trees installed? Stock axles won't fit, so here are exactly the same axles as they came with your Rebuffini triple tree kit. Chrome finish.

Mid Glide	Wide Glide	
746297	746299	Fits Rebuffini trees on 1988 thru 1999 XL, FXR and FXD
746298	746300	Fits Rebuffini trees on 2000 thru 2007 XL and 2000 thru 2003 Dyna
746349	746350	Fits Rebuffini trees on 2008 to present XL
746301	746302	Fits Rebuffini trees on 2004 thru 2005 Dyna
N/A	746303	Fits Rebuffini trees on 2006 thru 2007 Dyna
N/A	746351	Fits Rebuffini trees on 2008 to present Dyna
N/A	746352	Fits Rebuffini trees on 2008 to present FXCW and FXCWC Rocker





TOLLE SOLID BILLET ALUMINUM TRIPLE TREES

These billet Tolle triple trees are available in 3°, 5° and 7° raked versions, and in Fat Bob Custom Style with visible tube cap, and Fat Bob style with hidden tube cap. To ensure a comfortable ride and easy handling of your motorcycle make sure you choose the correct rake and fork tube length combination for the correct trail, if in doubt check with your Zodiac dealer. Correct trail is 5 cm to 10 cm (2" to 4") for rigid frames and 8 cm to 15 cm (3 1/4" to 6") for swing arm frames. The upper tree of the Fat Bob Custom Style trees has open slots, which increases the pressure on the tubes instead of the tube cups. This significantly increases the stability, particularly with long forks. The lower trees of both styles have open slots in the rear, to properly secure the tubes. OEM or other triple trees do not have this feature. The triple trees have a width of 250 mm and will accept 1 5/8" (41.27 mm) fork tubes, but will also take 35 mm and 39 mm fork tubes when proper adapter bushings and top fork tube plugs are used. Steering stops, adapter bushings, as well as other triple tree related parts are available separately. These triple trees are also available upon Special Order when you need them with a different rake as listed below.

Fat Bob Custom style triple tree with visible tube cap to fit most rigid frames, Duo Glide, 4 speed FL/FX and Softail models thru 1990 when separate bearing cup is used.

Rake +3°	Rake +5°	Rake +7°	
731172	731173	731174	With built-in steering stop

Fat Bob Custom style triple tree with visible tube cap to fit all FXD, FXR, XL and Softail frames with cast bearing cup 1991 to present.

Rake +3°	Rake +5°	Rake +7°	
731175	731176	731177	With built-in steering stop

Fat Bob style triple tree with hidden tube cap to fit rigid frames, Duo Glide, 4 speed FX/FL and Softail models thru 1990 when separate bearing cup is used.

Rake +3°	Rake +5°	Rake +7°	
731184	731185	731186	With built-in steering stop

Fat Bob style triple tree with hidden tube cap to fit FXD, FXR, XL and Softail models 1991 to present on all frames with cast bearing cup.

Rake +3°	Rake +5°	Rake +7°	
731187	731185	731189	With built-in steering stop
N/A	731188	N/A	Without steering stop

Adapter Bushings and Top Tube plugs

Needed to adapt 35 mm and 39 mm Sportster, Dyna, and Superglide tubes to Tolle triple trees.

711165	Adapter bushings 35 mm to 1 5/8" (41.27 mm)
711164	Adapter bushings 39 mm to 1 5/8" (41.27 mm)
731200	NEW Top plugs for 39 mm tubes in Hidden Tube Cap style Tolle trees

Note: Tolle does not recommend use of Triple Trees with hidden tube caps for forks longer than 12" over stock FL (40" or 1015 mm measured from the underside of the upper tree to the center of the wheel axle) and a trail not exceeding 5 1/8" (130 mm).





TOLLE'S ADJUSTABLE TRIPLE TREES

Tolle patented these famous adjustable triple trees in 1986. Their Number One advantage is that they allow you to adjust the fork angle to achieve the optimum trail. Nobody knows exactly what the correct trail is, guideline for rigid frames is between 2" and 4" (50 and 111 mm), where frames with rear suspension need a trail between 3" and 6" (75 and 152 mm). You can adjust these triple trees from zero to 17 degrees, allowing you to change to the optimum trail, no matter if you use short or long forks. Tolle adjustable triple trees are CNC machined in aircraft quality aluminum and have a mirror shine polish finish. Lower triple tree plates have open slots in the rear, to properly secure the tubes. OEM triple trees do not have this unique feature. Available as 220 mm pitch Mid-Glide triple tree, or 250 mm pitch Wide Glide. Both are suitable for 1 5/8" (41.27 mm) diameter fork tubes. These triple trees can also be used with 39 mm fork tubes as found in XL, FXR and Dyna models when you also order 39 mm adapter bushings and fork plugs. Steering stop kits and adapter bushings as well as other related triple tree parts are separately available.

Mid-Glide adjustable triple tree (220 mm)

711134 Fits rigid, Duo Glide, Dyna, FXR, XL and Softtail frames thru 1990

Wide-Glide adjustable triple tree (250 mm)

711138 Fits rigid, Duo Glide and Softtail frames thru 1990 when separate bearing cup is used, also fits Dyna, FXR, XL and Softtail frames with cast bearing cups 1991 to present

Adapter bushings

Needed to adapt 39 mm fork tubes as used in FXR, Dyna and Sportster models, to the adjustable triple trees.

711164 Adapter 39 mm to 1 5/8" (41.27 mm)

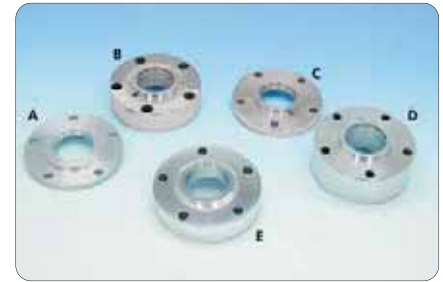
Stainless Steel fork tube plugs

Replacement fork tube plugs for use with Tolle adjustable triple trees. Sold in pairs.

711144 Fits 1949 thru 1977 1 5/8" tubes

711145 Fits 1978 to present 1 5/8" tubes

711146 Fits 1984 to present 39 mm tubes



WHEEL HUB SPACERS

- A. 711204** Converts 1967-1972 drum brake hub to accept disc brake rotor
- B. 711205** FX hub (1977-1983) to Hydra Tolle fork 250
- C. 711206** FX hub (1977-1983) to Hydra Tolle fork 220
- D. 711207** FX fork/hub (1977-1983) to Tolle triple tree 250
- E. 711208** FX fork/hub (1977-1983) to Tolle triple tree 220



AXLES

- A. 711195** Axle for Tolleglide with spacers, "hidden axle"
- B. 711197** Axle for Tolleglide width 220 mm
- C. 711199** Axle for 39 mm fork and 220 mm wide triple trees
- D. 711200** Axle for 39 mm fork and 250 mm wide triple trees



TÜV APPROVED ONLY FOR 0-14°



HANDLEBAR COVER CLAMP

A chrome plated handlebar cover for 1960 thru 1984 FL and FLH models. Available with and without steering damper hole.

241161 Clamp cover with hole (OEM 58589-60)

241159 Clamp cover without hole (OEM 58590-60)



HANDLEBAR BUSHINGS FOR HARLEY FL TOP TRIPLE CLAMP

Original style press-in bushings for Harley 1949 thru 1972. Available in standard and +.007" oversize. Sold per pair.

094028 Standard bushing set (OEM 56158-49)

094025 +.007" oversize bushing set



FORK AIR BAFFLE

Show-chrome fork air baffle bolts straight to the lower triple tree on most 1979 thru 2000 FLH and FLT models.

339012 Fork air baffle (OEM 58520-79TB)



THREE PIECE COVER FOR HARLEY LOWER TRIPLE CLAMP FX-XL

Mirror finished, chrome plated 3 piece clamp cover. Designed for easily customizing the black wrinkle finished lower clamp on 1983 thru 1985 XLX and XR1000, 1986 thru 1987 FXR and XL883 models with 35 mm forks, without taking the fork tubes out. Installs in minutes with simple hand tools. Includes chrome button head allen hardware (OEM 45708-85T).

301657 Lower triple clamp cover FX and XL



LOWER TRIPLE CLAMP COVER

Super looking, chrome finished one piece cover for 1971 and later lower triple clamp cover. Fits all Narrow Glides with 35 mm forks and lower clamp tapped for cover (OEM 45751-71A).

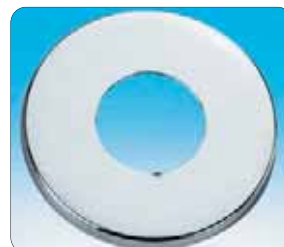
093515 Lower triple clamp cover



WIDE GLIDE DAMPER KNOB

Fits FL models 1949 to early 1977, chrome finish (OEM 46700-49).

093500 Wide Glide Damper Knob



BIG TWIN HEAD CUP DUST SHIELD

Fits FL and FLH models 1949 thru 2004, FLT models 1980 thru 2007, FX models 1971 thru 1985, FXWG models 1980 thru 1986, Dyna models 1982 thru 2003, Softail models 1984 thru 1988 and Sportster models 1982 thru 2003.

093432 Top (OEM 48361-80)

093434 Bottom (OEM 48365-48)



STEERING HEAD BEARING

Also known as neck post bearing. These Timken bearings are stock equipment in all 1960 to present Big Twin models, 1982 to present Sportster and 2002 to present V-Rod. Sold in sets of bearing and outer race, fits upper and lower bearing cup. Order 2 for 1 motorcycle.

056072 Taper bearing, set contains bearing and outer race (OEM 48300-60)



BEARING STEM JAM NUT

Chrome finish replacement for the seated nut on top of the fork stem bearing (OEM 48330-48A).

345125 Bearing jam nut



TRIPLE-TREE BEARING NUT

Dust cover & nut in one, chrome finish. Fits FL 1949 thru early 1977, FXWG 1980-up and FXST 1984 to present (OEM 48330-48A).

094012 Triple-tree bearing nut



CHROME STEERING HEAD BEARING CUPS

Chrome plated bearing cups for Harley. Fits FL and FLH models 1960 thru 1984, FX models 1971 thru 1985, FXWG models 1980 thru 1986, Softail models 1984 thru 1988, as well as many Custom style frames. Can also be used to convert 1949 thru 1959 Big Twins from ball bearings to tapered Timken bearings. Sold in sets of 2 (OEM 48311-60).

056070 Chrome steering head bearing cups



STEERING HEAD BEARING CUP FOR 45CI AND 1954 THRU 1977 SPORTSTER

Chrome plated bearing cup for 1940 thru 1973 45CI (750 cc) and Sportster models 1954 thru 1977. These are to be used to upgrade from the stock style balls and cups to tapered Timken style bearings. Parts are sold individually, order two bearing cups, one upper and one lower bearing and race.

301644 Chrome bearing cup (replaces OEM 48310-30)

231868 Timken bearing, lower

231869 Timken bearing, upper

231984 Race for Timken bearing, lower and upper



PRO-ONE HIDE-AWAY FORK STOP KIT

A great way to keep your forks from banging the gas tank without ugly tabs, brackets and bumpers. This system uses a unique neck cup design that offers solid fork stops that are completely invisible. Machined out of stainless steel and polished to a shining finish.

239441 Fork Stop Kit



STAINLESS STEEL HIDDEN STEERING STOP

Prevent your forks from banging the gas tank and install this hidden mount steering stop kit. Fits all Big Twin frames with loose type bearing cups, Sportster Frames with Big Twin type cups and most aftermarket style frames. Just drive the lower bearing cup into your frame, drill 4 holes thru the cup into your frame and secure the cup with the 4 pins provided. The steer stop is installed the same way on the lower triple tree. A matching bearing cup for the top steering head bearing is included in each kit. Machined from stainless steel with a polished finish. Works with stock style bearings and seals. The steer stop plate is available separately as a replacement part or for use with our North Sea Chopper High Neck and Low Seat frames.

094245 Hidden steering stop kit for Big Twin

094243 Steer stop plate only



STEERING STOP

Stainless steel steering stops. Available as hidden steering stop for models with loose steering head cups as well as for models with cast bearing cups. Hidden stops are available as bottom cup only and as a set that includes both top and bottom cup.

A. 711160 Bearing cup with hidden steering stop for Big Twin

B. 711161 Bearing cup set top and bottom with hidden steering stop for Big Twin

C. 711162 All XL, FXD and FXR models

D. 711163 All Duo Glide and Softail models as well as rigid frames



STAINLESS STEEL STEERING STOPS

These stainless steel steering stops are great when you install an aftermarket triple tree or front fork in a stock or aftermarket frame. Prevents your forks from damaging the gas tank. These steer stops are installed on the lower triple tree, under the steering head bearing. Just drill 4 holes in the triple tree using the steer stop as a jig and secure the steer stop with the 4 provided pins. Available in two versions, type A for use in FXR, Sportster and Dyna style frames, type B for use in Hardtail, Duo Glide and Softail style frames.

A. 094246 Fits XL, FXD and FXR models

B. 094247 Fits hardtail, Duo Glide and Softail models



STAINLESS STEEL INTERNAL FORK STOP KIT

This internal fork stop is made from Stainless Steel and keeps the forks from banging the gas tank with no tabs or brackets disturbing the smooth lines of your bike. The neck cup design offers a solid fork stop. Available with smooth or grooved neck cups. Works with stock style bearings and seals on any Big Twin frame with loose type bearing cups.

090097 Grooved stainless fork stop kit

090099 Smooth stainless fork stop kit

094244 Replacement steer stop plate for the lower triple tree



STEERING STEM TOP NUT LOCK WASHER

Lock washer for the steering stem top nut for Wide Glide front ends without mechanical steering damper as used on 1949 thru 1977 FL, 1980 thru 1984 FLH, 1980 thru 1986 FXWG, 1984 to present FXST, 1993 thru 2007 FXDWG, 2006 thru 2007 FXD and 2008 to present FXCW.

292176 Lock washer, dealer 10-pack (OEM 45717-63)



GLIDE ACORN TOP STEM NUT

Another stylish design for the top of your front fork stem is this "Glide" Acorn nut. Flawless chrome plated. Fits all Wide Glide front ends except models with mechanical steering damper (OEM 45718-60).

345118 Chrome Acorn stem nut



ACORN FORK STEM NUT

Beautiful chromed acorn nut for the top of your front fork stem. Fits all Wide Glide front ends except models with mechanical steering damper (OEM 45718-60).

345126 Acorn stem nut



COLONY CUSTOM ACORN TOP STEM NUTS

Top quality chrome plated acorn stem nuts. The shoulder on the base fits into the top triple clamp for positive alignment. Available for Big Twin models 1936 thru 1977, and 45 CI models with Springer forks.

741829 Fits 1936 thru 1977 Big Twin models

741830 Fits 45 CI models with Springer forks



FORK STEM NUT FOR HARLEY NARROW GLIDE

Triple chrome plated stem nut, fits FX, FXR models 1971 to present and XL 1979 to present with stock triple clamp (OEM 45718-71).

059005 Triple chrome plated stem nut



COLONY CUSTOM DOMED STEM BOLT

Top quality chrome plated domed stem bolt. Comes complete with chrome plated washer. Fits all 1986 to present FLST, FXR, Dyna (except FXDWG) and Sportster models.

741831 Custom domed stem bolt



LANDMARK'S STAINLESS STEEL FORK BOLTS AND STEM NUT COVERS

Dress-up your front end with these brilliant polished fork caps and stem nut covers. CNC machined from 303 Stainless Steel. Fits all FXR models with 39 mm front ends. Available in 3 designs as a set for both fork cap bolts and stem nut as well as separate sets. A perfect match with our other USA made stainless steel accessories.

Cover set, for stem nut and fork cap bolts (3 pcs.)

<i>Bandit</i>	<i>Legend</i>	<i>Renegade</i>
<i>Style</i>	<i>Style</i>	<i>Style</i>

236847 236848 236849

Fork cap covers (2 pcs.)

236852 Renegade Style



FORK TUBE CAP BOLT FOR EARLY WIDE GLIDE FORKS

Top quality chrome plated fork tube cap bolt. Fits all 1949 thru 1977 FL and FLH models with Wide Glide forks. (OEM 45754-60)

301721 Zodiac, sold in sets of 2

741825 USA made by Colony, sold each including chrome washer



CUSTOM TUBE CAP BOLTS FOR WIDE GLIDE FRONT FORK

Chrome plated fork cap bolts with smoothed and rounded edges. Fits FL and FLH Wide Glide front forks 1949 thru 1977. Sold in sets of 2.

301121 Custom tube cap bolts for early style Wide Glide forks (OEM 45754-60).



STAINLESS STEEL FORK TUBE PLUGS

Made by Tolle from Stainless Steel. Feature a high luster polished finish. Sold in pairs.

711147 Fits 1949 thru 1977 Wide Glide forks

711148 Fits 1978 to present Wide Glide forks



TUBE CAP BOLT FOR LATE HARLEY WIDE GLIDE FRONT FORK

Chrome plated fork tube cap bolt, fits FXWG/FXST models 1977 to present (except Springer) (pair)(OEM 45419-80).

093472 Fork tube cap bolt



COLONY FORK TUBE CAP BOLT FOR LATE WIDE GLIDE FORKS

Top quality chrome plated fork tube cap bolt. Comes complete with chrome plated washer (OEM 5710). Fits all 1977 to present FL, FLH, FLT, FXWG, and Softail models with Showa Wide Glide forks. Sold each.

741826 Fork tube cap bolt (OEM 45419-80)



COLONY DOMED FORK TUBE CAP BOLT FOR LATE WIDE GLIDE FORKS

Top quality chrome plated domed fork tube cap bolt. Fits all 1977 to present FL, FLH, FLT, FXWG, and Softail models with Showa Wide Glide forks. Sold each.

741828 Fork tube cap bolt (OEM 45419-80)



CHROME CUSTOM FORK TUBE CAPS

These sleek looking and beautiful chrome plated fork tube caps fit the 41 mm forks on all 1977 to present Big Twin models. Feature "plugged of" Allen hole. O-rings are also included. Sold in sets of 2.

094279 Chrome custom fork tube cap set



FORK TUBE WASHERS FOR LATE WIDE GLIDE FORKS

Top quality chrome plated washers as used under the fork tube cap bolt on all 1949 to present, FL, FLH, FLT, FXWG, and Softail models with 41 mm Showa Wide Glide forks. Sold in sets of 2 or in 10-packs. (OEM 5710)

292171 Zodiac, dealer 10-pack

741827 USA made by Colony, set of 2



TUBE CAP BOLT FOR HARLEY NARROW GLIDE FRONT FORK

Chrome plated fork cap bolt, fits FX/FXR/XL models 1973 thru 1986 (pair) (OEM 45993-73).

301119 Fork tube cap bolts



COLONY FORK TUBE CAP BOLT FOR NARROW GLIDE FORKS

Top quality chrome plated fork tube cap bolt fits all FX, FXR and XL models 1973 thru mid 1985. Sold each.

741821 Fork tube cap bolt (OEM 45993-73)



COLONY FORK TUBE CAP BOLT FOR 39 MM FORKS

Top quality chrome plated fork tube cap bolt. Fits all Sportster, FXR and Dyna models with 39 mm forks 1987 to present. Sold each.

741822 Fork tube cap bolt (OEM 45996-87)



COLONY FORK TUBE CAP BOLT FOR WIDE GLIDE FORKS

Top quality chrome plated fork tube cap bolt. Fits all FL and FLH Wide Glide forks 1949 thru 1977. Sold each.

741823 Fork tube cap bolt (OEM 45754-60)



FORK TUBE PLUG FOR LATE WIDE GLIDE FORKS

Top quality chrome plated fork tube plug. Fits all 1977 to present models equipped with Showa Wide Glide fork (except FL with adjustable triple trees, and FLT/FLHT/FLHS). Sold each.

741824 Fork tube plug (OEM 45838-77)



TUBE PLUG FOR HARLEY WIDE GLIDE FRONT FORK

Zinc finished fork tube plug, fits FL(H) Wide Glide front fork 1949-1977 (pair) (OEM 45776-49).

093436 Fork tube caps (pair)



TUBE PLUG FOR LATE HARLEY WIDE GLIDE FRONT FORK

Fits all models 1977 to present equipped with Showa Wide Glide forks (except FL with adjustable triple trees, and FLT/FLHT/FLHS). Sold in pairs (OEM 45838-77).

094143 Tube plugs



PRO-ONE BILLET DUST BOOT COVERS

These extended thread-on style boot covers are made from Billet aluminum and show chromed. They will fit forks with 1 5/8" (41, 27 mm) inner tubes.

731898 Contoured

731899 Tapered



FORK BOOTS AND FORK BOOT CAPS

Synthetic rubber fork boots, available in three sizes for OEM replacement or custom use. We also offer a show-chromed cover that fits over the stock fork boot. Both boots and boot caps are sold in pairs.

358013 Fork boots small, fits Harley with Kayaba front forks (XL-FX) (OEM 45983-73)

358012 Fork boots medium, fits Harley with Showa front forks (XL-FX) (OEM 45404-75)

359018 Fork boots large, fits Harley Wide Glide front forks (FL-FLH)

358077 Fork boots large, stock replacement for FXWG 1980 thru 1986 and 1984 up FXST (OEM 45420-80)

301248 Show-chrome boot caps (FX(R)/XL) 35 mm forks (OEM 45350-84T)

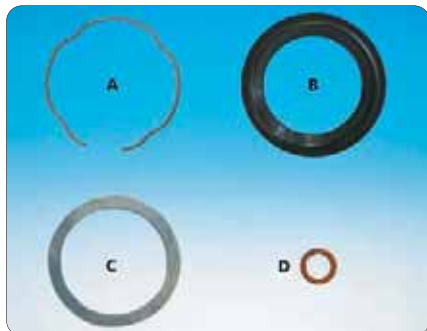
301433 Chrome fork boot caps for 4 Speed FL models from 1949-early 1977, fit over the stock rubber boots

PRO-ONE FORK DUST COVERS

Pro-One's fork leg dust covers are machined from solid aluminum and available smooth and ball milled. Check out our fork bolt covers and stem nut covers for a perfect matching set of aluminum covers for your front end. Fits FXST and FLST models. Covers have "low maintenance" chrome plated finish.

239424 Smooth fork leg dust covers

239423 Ball milled fork leg dust covers



FRONT FORK SEAL RETAINING CLIPS AND BACK UP WASHERS

Copper drain plug washers, fork tube cap seals, retaining rings, slider tube O-rings, oil seal backup spacer rings, dust seals and all other small parts you may need to rebuild a front fork.

Fits 35 mm forks on 1980 thru 1987 FX, FXR and Sportster models

A. 742469 Wire retaining ring, 6-pack (OEM 45908-80)

Fits 39 mm forks on 1987 thru 1994 FXR, 1988 to present Sportster and 1991 thru 2005 Dyna Narrow Glide models

A. 742468 Wire retaining ring, 6-pack (OEM 45905-87)

B. 742398 Dust seal, each (OEM 45401-87)

C. 742460 Oil seal backup washer, 2-pack (OEM 45377-87)

Fits 41 mm forks on 1977 thru 1984 FL and FLH models

A. 742466 Wire retaining ring, 6-pack (OEM 48842-77A)

C. 742467 Oil seal backup washer, 2-pack (OEM 45844-77)

Fits 41 mm forks on 1985 to present Softail and Touring models, and 1991 thru 2005 Dyna

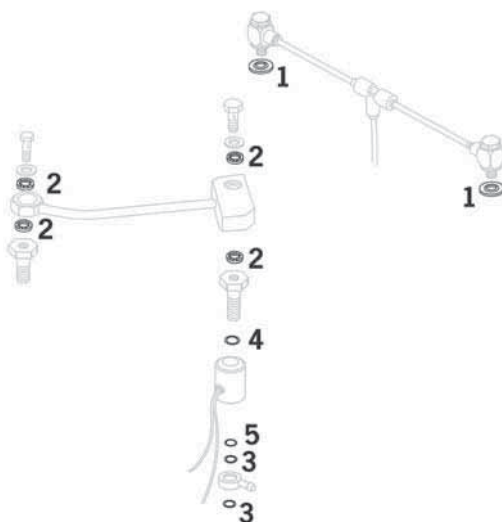
C. 742400 Oil seal backup washer, 2-pack (OEM 45865-84)

Fits 49 mm forks on 2002 to present V-Rod, 2006 to present Dyna and 2008 to present Rocker and Rocker-C

A. 742472 Wire retaining ring, 6-pack (OEM 46513-01)

B. 742471 Dust seal, 2-pack (OEM 46512-01)

D. 742474 Copper ring, damper retaining screw, 6-pack (OEM 46615-06)



SEALS FOR AIR CONTROLLED FRONT FORKS

O-rings and seals for the stock front fork air ride control system on 1994 thru 1999 Touring models.

1. 742459 Bonded seal washer, 6-pack (OEM 41792-94)

2. 348014 Bonded seal washer, 10-pack (OEM 41733-88)

3. 022404 O-ring, 10-pack (OEM 11132)

4. 638079 O-ring, 10-pack (OEM 11170)

5. 700460 O-ring, 10-pack (OEM 11171 & 11298)



JAMES GASKETS' FRONT FORK SEAL KITS

Very complete kits that contain everything you need when doing a fork job. Contains a pair of oils seals, dust seals, oil seal back up washers, plug-rings, oil seal retaining rings, drain plugs, drain plug washers and all other seals you might need.

740605 Fits the 39 mm forks on 1996 to present Sportster Sport models

740606 Fits the 41 mm forks on 2000 to present FXSTD Deuce models

740607 Fits the 49 mm forks on 2002 to present V-Rod, 2006 to present Dyna and 2008 to present Softail Rocker models



FRONT FORK SEALS AND SEAL KITS FOR 41 MM FORKS ON 2000 THRU 2007 DEUCE

Complete kit to rebuild both front fork tubes on 2000 thru 2007 FXSTD Deuce models. Kits contain copper drain plug washers, fork tube cap seals, retaining rings, slider tube O-rings, oil seal backup spacer rings, oil seals, dust seals and special fork oil seal grease for easy of installation and long service life. Most parts are also individually available.

742462 James Gaskets complete fork oil and dust seal kit FXSTD 2000 thru 2007

Individual parts

1. 022424 Fork tube cap seal, 10-pack, Zodiac (OEM 45733-48)

2. 742470 Fork dust seals, 2-pack, James Gaskets (OEM 46175-00)

3. 742466 Retianing ring, 6-pack, James Gaskets (OEM 45842-77A)

4. 231179 Fork seal, each, James Gaskets (OEM 45875-84)



FRONT FORK OIL SEALS, OIL SEAL KITS AND O-RINGS

Complete front fork seal kits contain all required oil seals, o-rings and seal washers to completely rebuild your front fork.

Complete kits

James	Athena	Zodiac	OEM	
-	700343	-	45849-71	Fits Sportster and FX models 1971 thru 1973
-	700344	-	45849-73	35 mm Kayaba forks on XL and FX models 1973 thru 1975
231183	700476	-	45849-75	35 mm Showa forks on XL and FX models 1975 thru 1983
231185	700347	-	45849-84A	35 mm Showa forks on XL, FX and FXR models 1984 thru 1987
231186	700349	-	45849-87	39 mm Showa forks on XL and FXR models 1987 to present
234480	700348	-	45849-84K	Air control fork on FLT, FXR, FXRT, FXRS Convertible and Sport 1983 to present
231229	-	022472	45849-49	41 mm forks on FL models 1949 thru early 1977
-	700345	022473	45849-77	41 mm forks on FL models late 1977 thru 1983 and FXWG, FLT and FLHT 1980 thru 1983
231184	700346	-	45849-84	41 mm forks on FXWG, FLT, FLHT and Softail models 1984 to present

Zodiac

022355	XL and FX models 1971 thru 1972	OEM 45945-71
022325	35 mm Kayaba forks on XL and FX models 1973 thru 1975	45927-73
022330	35 mm Showa forks on XL and FX models 1975 thru 1983	45400-75
231177	35 mm Showa forks on XL, FX and FXR models 1984 thru 1987	45387-83
231178	39 mm Showa forks on XL 1987 to present, FXR 1987 thru 1994 and Dyna Narrow Glide 1991 thru 2005	45378-87
022352	41 mm forks on FL models 1949 thru early 1977	45852-48
022354	41 mm forks on FL models late 1977 thru 1983 and FXWG, FLT and FLHT 1980 thru 1983	45843-77
231179	41 mm forks on FXWG 1984 thru 1988, FLT, FLT and Softail models 1984 to present, FXDWG 1991 thru 2005	45875-84

Fork seals (sold in pairs)

Zodiac		OEM
742470	41 mm forks on FXSTD Deuce 2000 thru 2007	46175-00
742473	49 mm forks on V-Rod 2002 to present, FXD 2006 to present, FXCW 2008 to present	46514-01

O-rings (sold in 10 pack)

Zodiac		OEM
022424	Fork oil cap seal FL and FXWG models 1948 to present	45733-48
700341	Slider tube plug FL and FXWG models 1977 to present	45845-77
700353	Slider tube plug FX models 1973 thru 1987	45982-73
700339	Fork tube cap XL and FX models 1954 thru 1970	45780-52

Seal washers (sold in 10 pack)

Zodiac		OEM
700356	Fork damper stud FL models 1949 thru early 1977	46111-48
700357	Fork damper tube FL models 1949 thru early 1977	46125-48
700354	Drain plug, Kayaba forks on FL models 1973 thru early 1977	45986-73
700355	Fork damper tube, Kayaba forks on XL models 1973 thru 1974	45992-73
742461	Fork damper tube, 39 mm forks on XL models 1996 thru 2003	45398-96

Rear Fork Seals

Zodiac	James		OEM
022353	742475	Fits all models with steel hub front and rear 1973-1983, FL cast wheels front and rear 1980-1984 and FLT/FLHT cast wheel front and rear brake side only, 1982-1984	47519-72
022340	742476	Fits FX/FXR/XL models with cast or wire front wheels 1973-1983 (not FXWG), FL cast wheels front or rear 1973-1979 and FLT/FLHT cast wheels sprocket side 1980-1983	47519-83A



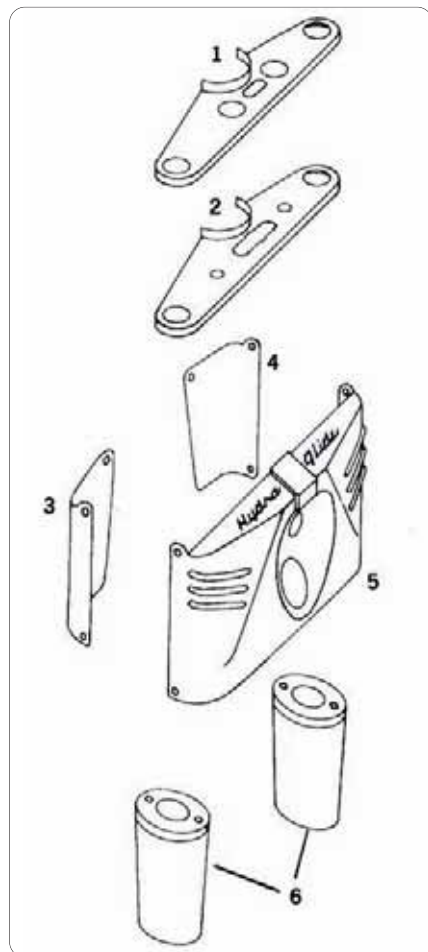
CHROME HEADLIGHT HOUSING CONVERSION KIT FOR HERITAGE SOFTAIL AND FAT BOY MODELS

Convert your Heritage Softail or Fat Boy from the stock headlight "tins" to the later model headlight housing with this complete kit. It includes the chromeplated two-piece aluminum headlight housing with all necessary mounting brackets, headlight bucket, chrome slider covers as well as covers for the lower triple tree and handlebar risers. This stylish kit bolts directly to the existing Original Equipment triple trees on all Heritage Softail and Fat Boy models from 1986 to present. All parts are separately available. A wider head lamp trim ring that makes the headlamp housing even look longer is available separately.

237336 Headlight housing conversion kit (hardware not included).

Replacement parts

- A. 160084** Chrome headlight housing (OEM 67847-60)
- B. 301880** Chrome right slider cover
- C. 301881** Chrome left slider cover
- D. 301878** Chrome riser cover
- E. 301879** Chrome lower triple tree under cover
- F. 162277** Inner headlight mount (OEM 67702-65)
- G. 162276** Outer headlight mount (OEM 67766-60)
- H. 160091** Headlight retaining ring
- I. 160056** Chrome outer ring (OEM 67712-60A)
- J. 162280** Mounting bracket (sold each)
- K. 231662** Beefy 7" head lamp trim ring (OEM 69627-99)



ANTIQUE HEAD LAMP TRIM FOR HARLEY

Accurate reproduction of the obsolete 1949 thru 1959 Big Twin head lamp trim. For restoration work or to give the 1960 thru 1984 FL models that classic look.

- 1. Triple tree cover with 3 1/2" center to center holes**
(For use on late model triple trees)
094070 Stainless Steel
094058 Show-chrome finish

- 2. Triple tree cover with stock center to center holes**
(OEM 45741-50)
094068 Stainless Steel
094066 Show-chrome finish

- 3. Right hand fork panel rear**
(OEM 46283-49)
094054 Stainless Steel
094062 Show-chrome finish

- 4. Left hand fork panel rear**
(OEM 46281-49)
094056 Stainless Steel
094064 Show-chrome finish

- 5. Front fork panel**
(OEM 46273-49)
094052 Stainless Steel
094060 Show-chrome finish

- 6. Chrome slider covers**
(OEM 45964-49)
301189 Standard length, pair
301191 2" overstock, pair
301192 4" over stock, pair



HERITAGE STYLE SLIDER COVERS

These special designed show chrome slider covers will give your bike that classic Hydra Glide look, without the expense of a new front end. Use in combination with our Hydra Glide fork panels and triple tree covers. Will fit most 1980 to present with 1 5/8" (41.27 mm) Wide Glide front ends. Mounting brackets must be custom made.

- 301696** Fork slider covers, set of 2



CHROME FORK TINS FOR FLST MODELS

Chromed reproductions of the Original Equipment parts, that will turn your Heritage Softail or Fat Boy into a real eye-catcher. They are made of highly-polished steel that is then given a lustrous chrome finish (OEM 67808-86, 67816-86 and 67820-86).

- 094090** Chrome headlight tins, 3 piece kit



NEW

ROLAND SANDS DESIGN TRACKER FORK BRACE

Designed by Roland Sands for those who want to eliminate their front fender but do not want to end up with 'flexy flyer'. Laser cut from 3/16" 1018 steel, chrome plated or with a black powder coat, but all with a stamped brass RSD logo and chrome hardware included. Available for all Narrow Glide or Wide Glide forks with up to 21 x 3 1/2" front wheel.

Fits Wide Glide forks

- 740751** Black
- 740752** Chrome

Fits Narrow Glide forks

- 740761** Black
- 740762** Chrome



NEW

CHROME FRONT FORK ANTI-TWEAK BRACE

Fork braces are also known as tweak bars and increase the torsional rigidity of your front fork. A great looking accessory that also improves road holding and really makes a difference on bikes equipped with a single disc front brake. CNC machined from solid billet aluminum, high luster polished and then chromed to perfection. Available for most models.

- 094101** Fits 39 mm forks on all 1987 to present Sportster (except XL 1200 N), 1991 thru 2005 Dyna and all FXR models (except FXRT)
- 094102** Fits 41 mm forks on all 1984 to present FXST Softail models and 1993 thru 2005 Dyna Wide Glides
- 094103** Fits 49 mm forks on 2006 to present Dyna (except FXDWG and FXDSE) and 2002 to present VRSCA, VRSCB and VRSCD V-Rods